

FROM THE OFFICE OF

CHARLES O. GEORGI COMPANY

2215 West County Road B

Saint Paul, Minnesota 55113

REGISTERED CIVIL ENGINEER AND LAND SURVEYOR

**Certificate
of Survey**

I Hereby Certify that this plat shows a survey made by me of the property described on this plat, and that the corners are correctly placed as shown, and that all locations have been correctly shown.

File — ARDEN HILLS ISLAND BEACH CLUB

Surveyed For Ray Johnson, Treasurer.

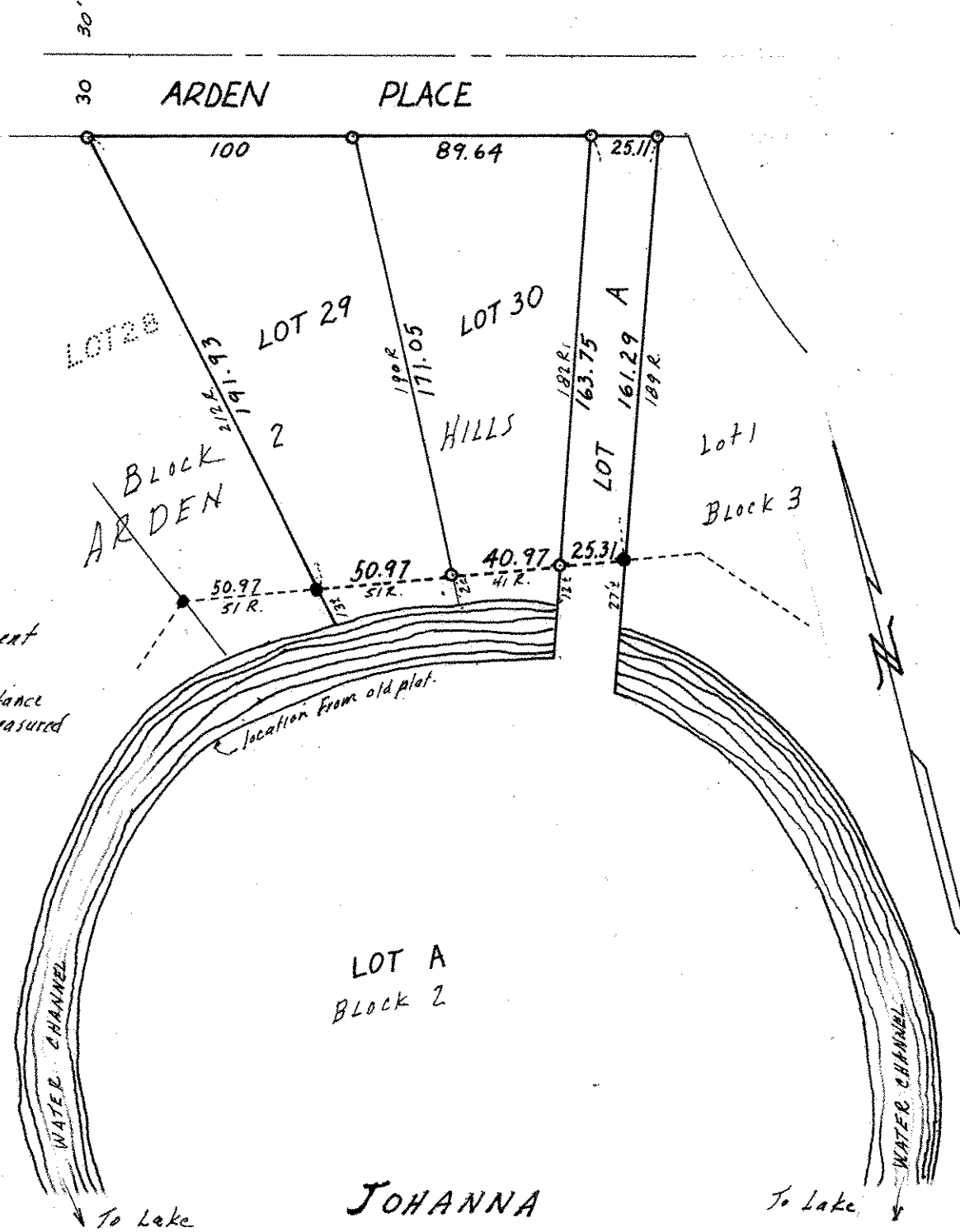
Date July 1970

Scale 1" = 60'

By *Charles O. Georgi*
REGISTERED LAND SURVEYOR

Description:

Lot A
Block 2
ARDEN HILLS
Ramsey County, Minn



- o Denotes Iron Monument
- Iron found in place.
- R Denote Record plat distance where it varies from measured distance.