

FROM THE OFFICE OF

CHARLES O. GEORGI COMPANY

2215 West County Road B

Saint Paul, Minnesota 55113

REGISTERED CIVIL ENGINEER AND LAND SURVEYOR

Certificate of Survey

I Hereby Certify that this plat shows a survey made by me of the property described on this plat, and that the corners are correctly placed as shown, and that all locations have been correctly shown.

5/70 Revised - Adjusted rear corners in East-West direction only to agree with 9th Section shortage.

Surveyed For Robert Kemnitz

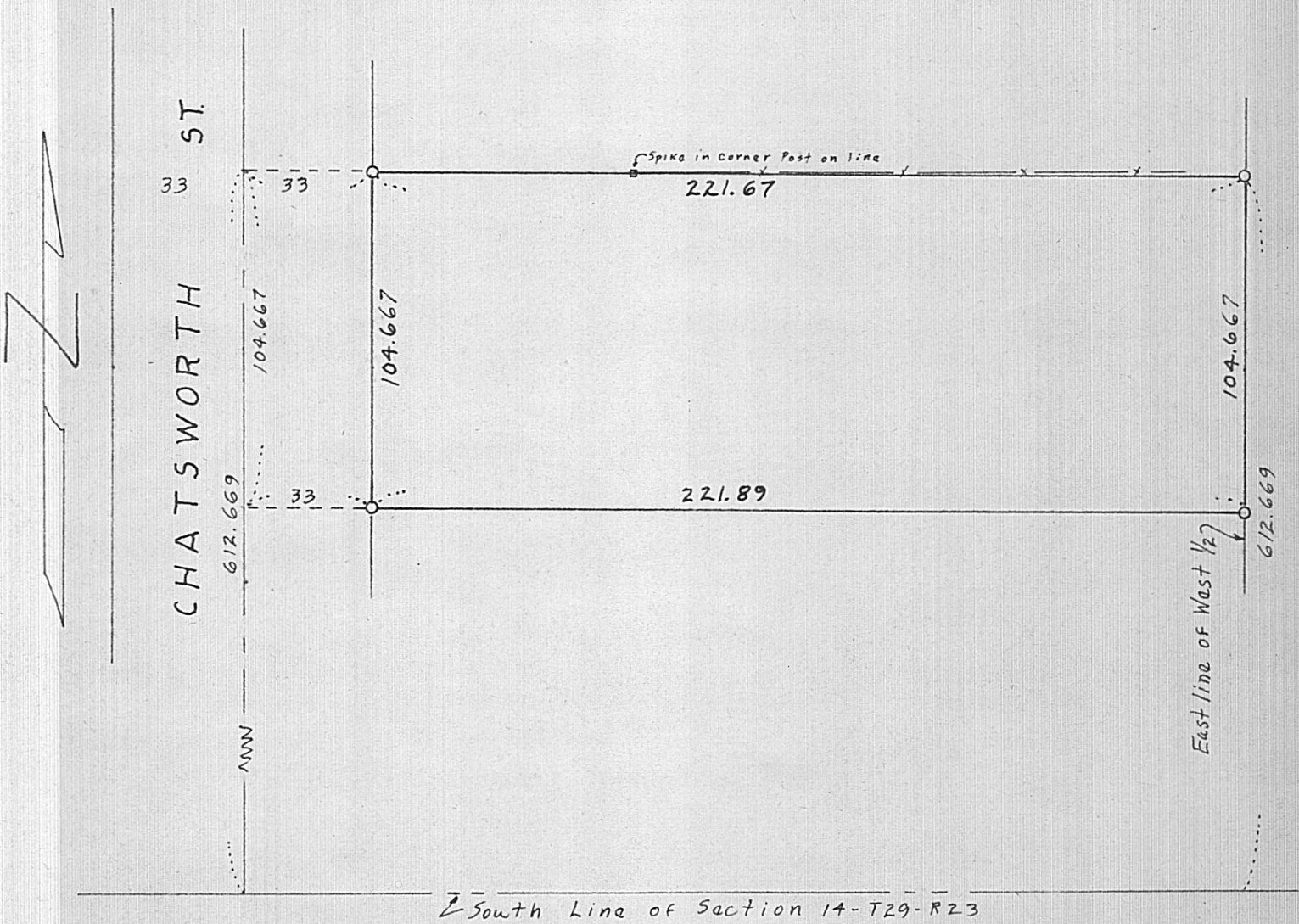
Date April 1970

Scale 1" = 40'

By Charles O. Georgi
REGISTERED LAND SURVEYOR

Description:

Subject to Chatsworth Street, the North 104.667 feet, more or less, of the South 612.669 feet, more or less, of the West 1/2 of part of the of the SE 1/4 of SW 1/4 lying West of the East 808.5 feet thereof in Section 14, T29, R23, Ramsey County, Minnesota.



o Denotes Iron Monument