

SW 22 29 22

FROM THE OFFICE OF

# CHARLES O. GEORGI COMPANY

2215 West County Road B

Saint Paul, Minnesota 55113

REGISTERED CIVIL ENGINEER AND LAND SURVEYOR

## Certificate of Survey

I Hereby Certify that this plat shows a <sup>Location</sup> survey made by me of the property described on this plat, and that the corners are correctly placed as shown, and that all locations have been correctly shown. <sup>12/1/69 - Marked "1st Line" File</sup>  
*McGough Const. - Phalen Park State Bank.*

Surveyed For City of St. Paul

Date October 1969

Scale 1" = 20'

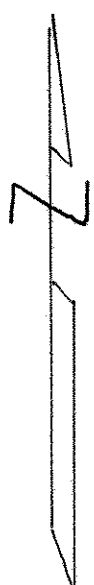
By *Charles O. Georgi*  
REGISTERED LAND SURVEYOR

**Description:**

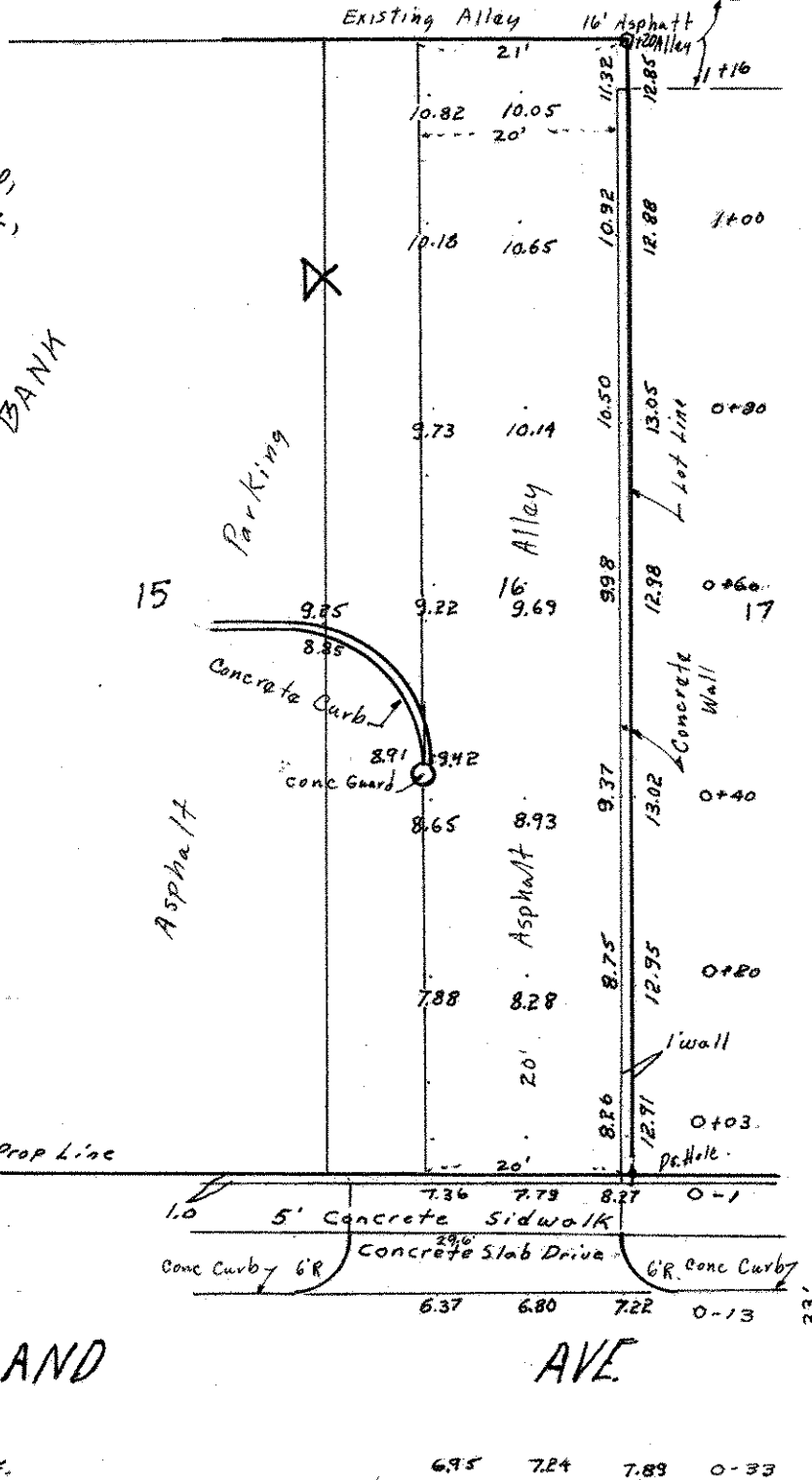
GRADING & SURFACING PLAN  
(AS BUILT)  
OF ALLEY - Over the East 21.0' Feet  
of Lot 16, Nilsson's Subdivision of Lots 9 & 10,  
Block 4, Rogers and Hendrick's Acre Lots No. 2,  
Except the East 1.0 Foot thereof.

B.M. = 206.0 First Floor Bank as shown on Plan

Elevation 8.28 denotes Elevation 208.28



PROSPERITY AVE.  
PHALEN PARK STATE BANK



MARYLAND AVE.