

NE 7 29 22

FROM THE OFFICE OF

# CHARLES O. GEORGI COMPANY

2215 West County Road B

Saint Paul, Minnesota 55113

REGISTERED CIVIL ENGINEER AND LAND SURVEYOR

## Certificate of Survey

I Hereby Certify that this plat shows a survey made by me of the property described on this plat, and that the corners are correctly placed as shown, and that all locations have been correctly shown.

Surveyed For Lawrence Saito

Date May 1969

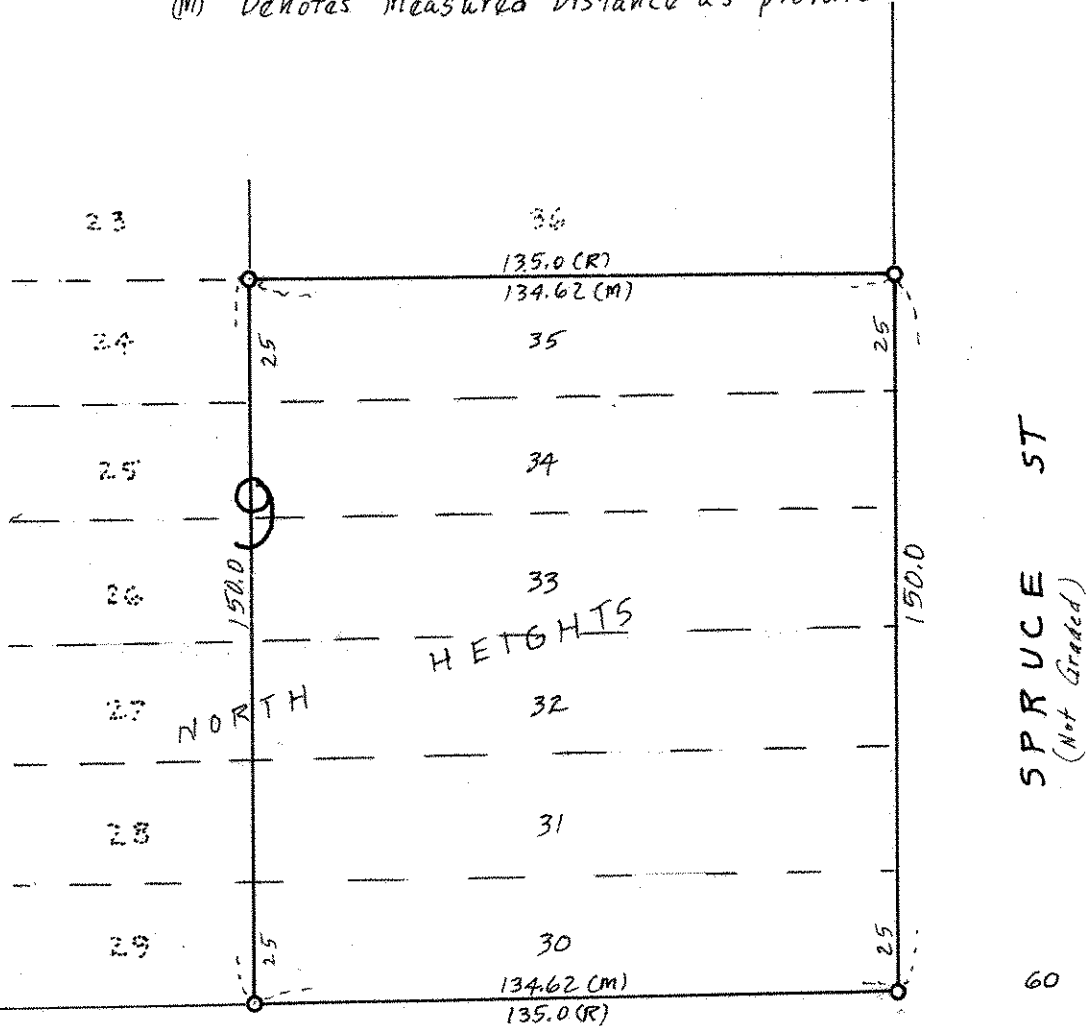
Scale 1" = 40'

By Charles O. Georgi  
REGISTERED LAND SURVEYOR

### Description:

Lots 30 thru 35,  
Block 9,  
North Heights,  
Ramsey County, Minnesota

(R) Denotes Record Plat Distance  
(M) Denotes Measured Distance as provided.



○ Denotes Iron Monument

33

DEMONT AVE.

1/4 1/4 Line

33