

FROM THE OFFICE OF

CHARLES O. GEORGI COMPANY

2215 West County Road B

Saint Paul, Minnesota 55113

REGISTERED CIVIL ENGINEER AND LAND SURVEYOR

Certificate of Survey

I Hereby Certify that this plat shows a survey made by me of the property described on this plat, and that the corners are correctly placed as shown, and that all locations have been correctly shown. House Location Added 5/5/69

Settled as

Surveyed For Bacchus Inc. - George Boldt

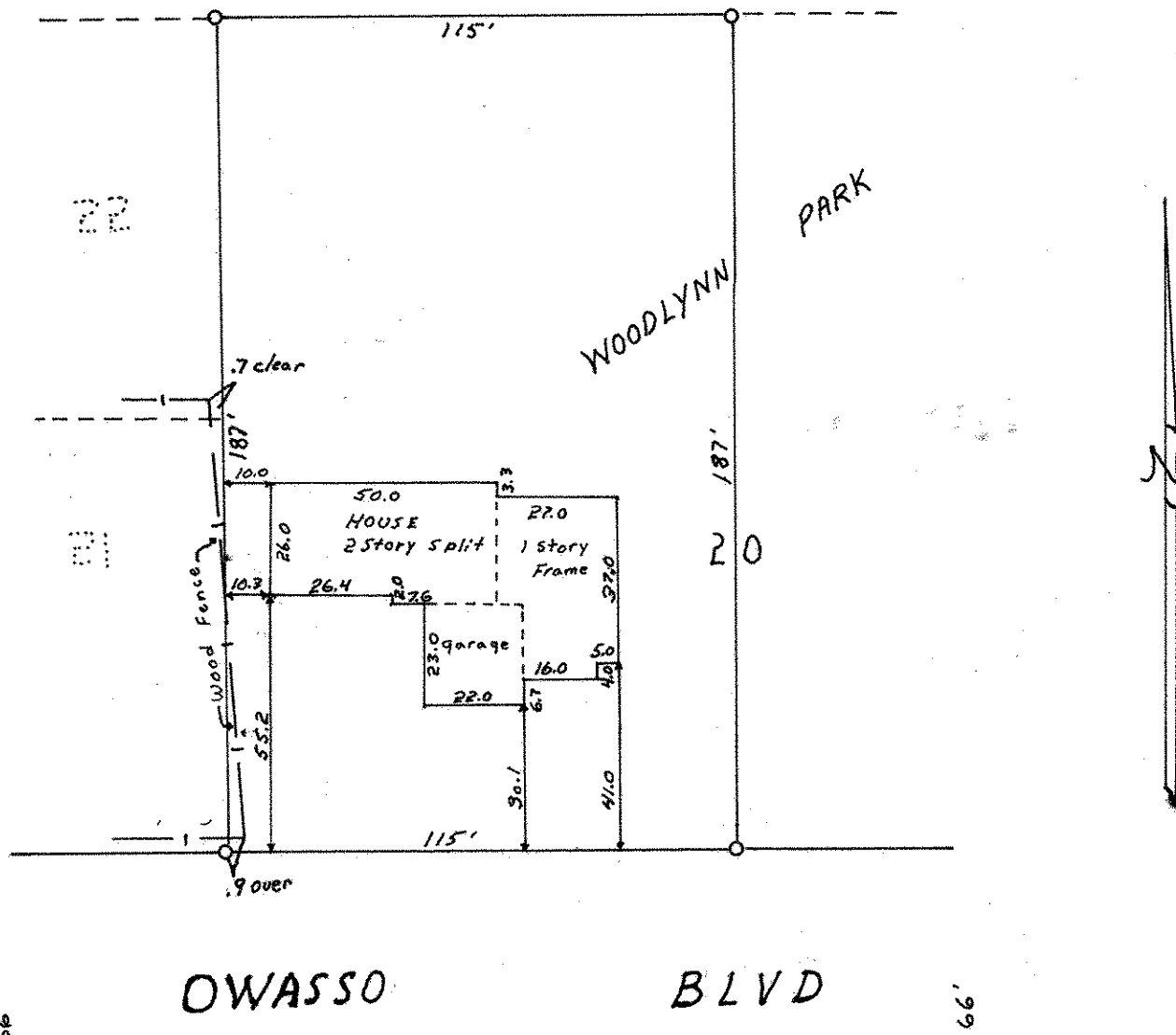
Date APRIL 1969

Scale 1" = 40'

By Charles O. Georgi
REGISTERED LAND SURVEYOR

Description:

The West 115 feet of Lot 20,
Woodlynn Park,
Ramsey County, Minn.



○ Denotes Iron Monument