

FROM THE OFFICE OF

**CHARLES O. GEORGI COMPANY**

2215 West County Road B

Saint Paul, Minnesota 55113

REGISTERED CIVIL ENGINEER AND LAND SURVEYOR

**Certificate  
of Survey**

*I Hereby Certify that this plat shows a survey made by me of the property described on this plat, and that the corners are correctly placed as shown, and that all locations have been correctly shown.*

Surveyed For Ronald Helt

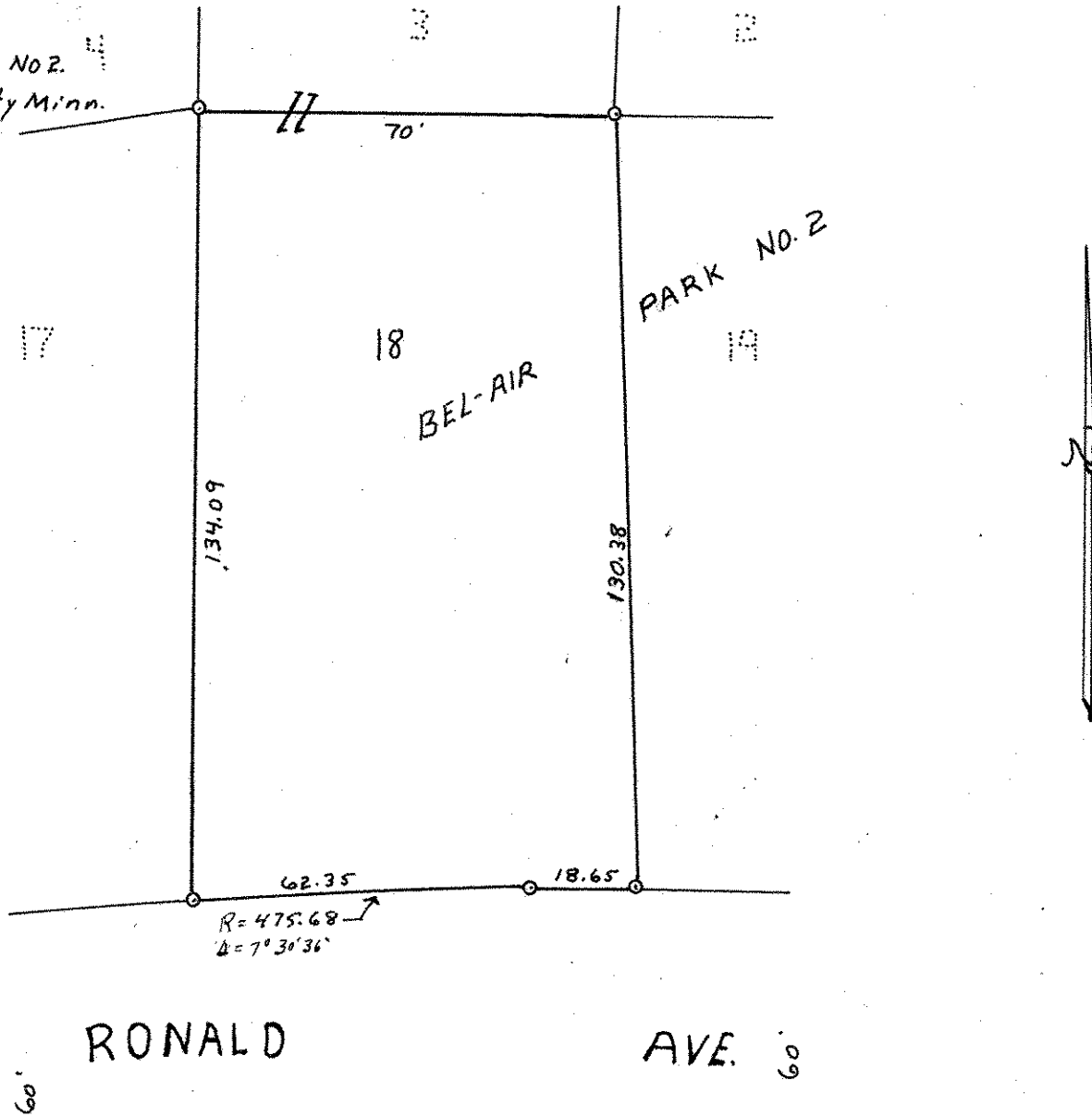
Date APRIL 1969

Scale 1" = 30'

By Charles O. Georgi  
REGISTERED LAND SURVEYOR

**Description:**

Lot 18  
Block 11  
Bel-Air Park No. 2  
Ramsey County Minn.



O Denotes Iron Monument