

FROM THE OFFICE OF

# CHARLES O. GEORGI COMPANY

2215 West County Road B

Saint Paul, Minnesota 55113

REGISTERED CIVIL ENGINEER AND LAND SURVEYOR

## Certificate of Survey

I Hereby Certify that this plat shows a survey made by me of the property described on this plat, and that the corners are correctly placed as shown, and that all locations have been correctly shown.

Surveyed For *Bacchus, Inc.*

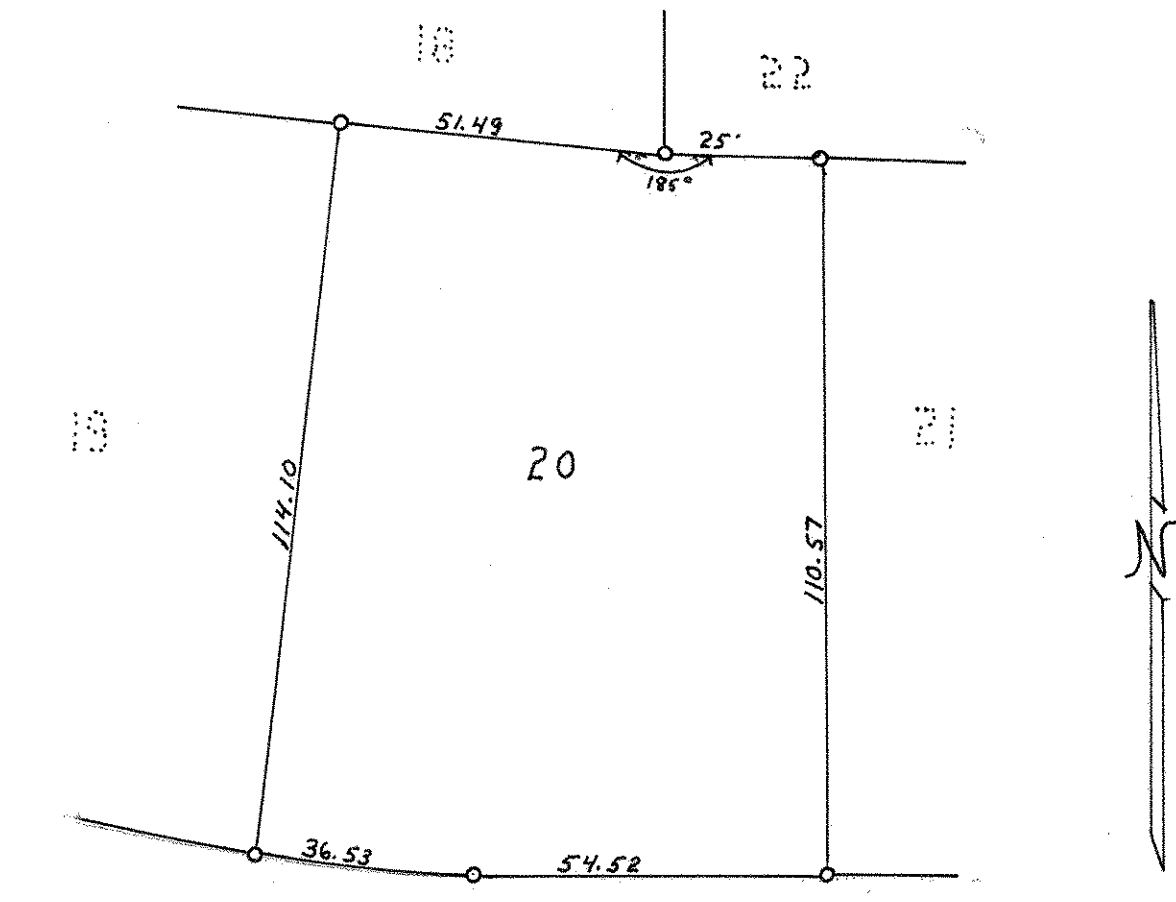
Date *Jan. 1967*

Scale *1" = 30'*

By *Charles O. Georgi*  
REGISTERED LAND SURVEYOR

**Description:**

Lot 20  
Block 12  
Bacchus White Bear Hills



○ Denotes Iron Monument

60' SPRUCE PLACE 60'  
R = 383.12