

FROM THE OFFICE OF

# CHARLES O. GEORGI COMPANY

2215 West County Road B

Saint Paul, Minnesota 55113

REGISTERED CIVIL ENGINEER AND LAND SURVEYOR

## Certificate of Survey

I Hereby Certify that this plat shows a survey made by me of the property described on this plat, and that the corners are correctly placed as shown, and that all locations have been correctly shown.

Surveyed For *H. Bacon & Co.*

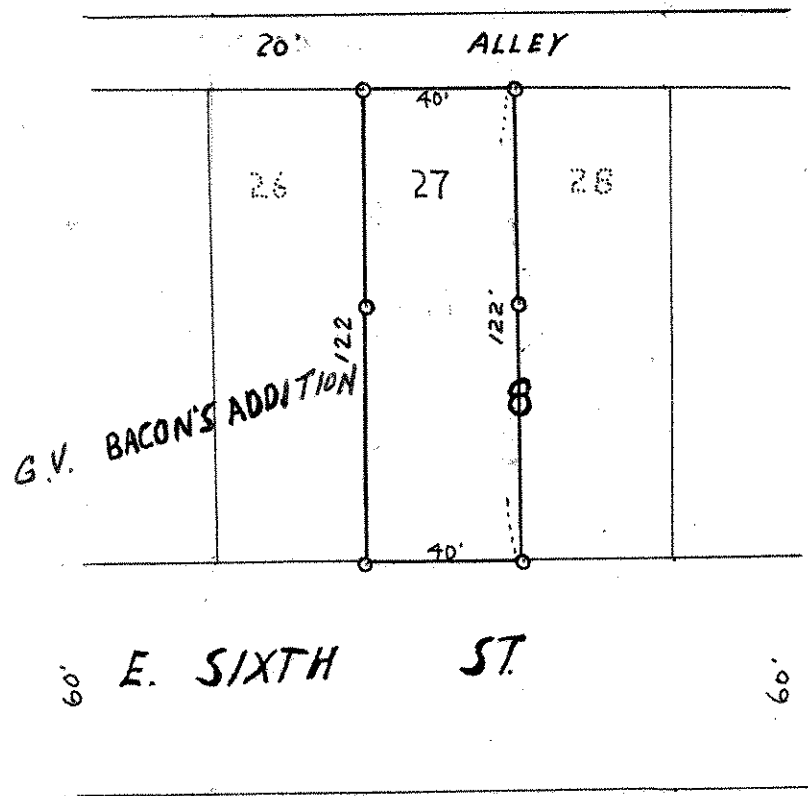
Date *Oct. 1968*

Scale *1" = 50'*

By *Charles O. Georgi*  
REGISTERED LAND SURVEYOR

**Description:**

*Lot 27  
Block 8  
G.V. Bacon's Addition*



o Denotes Iron Monument