

FROM THE OFFICE OF

CHARLES O. GEORGI COMPANY

2215 West County Road B

Saint Paul, Minnesota 55113

REGISTERED CIVIL ENGINEER AND LAND SURVEYOR



**Certificate
of Survey**

I Hereby Certify that this plat shows a survey made by me of the property described on this plat, and that the corners are correctly placed as shown, and that all locations have been correctly shown.

Surveyed For.....*Al Bentley*.....

Date.....*May 1968*.....

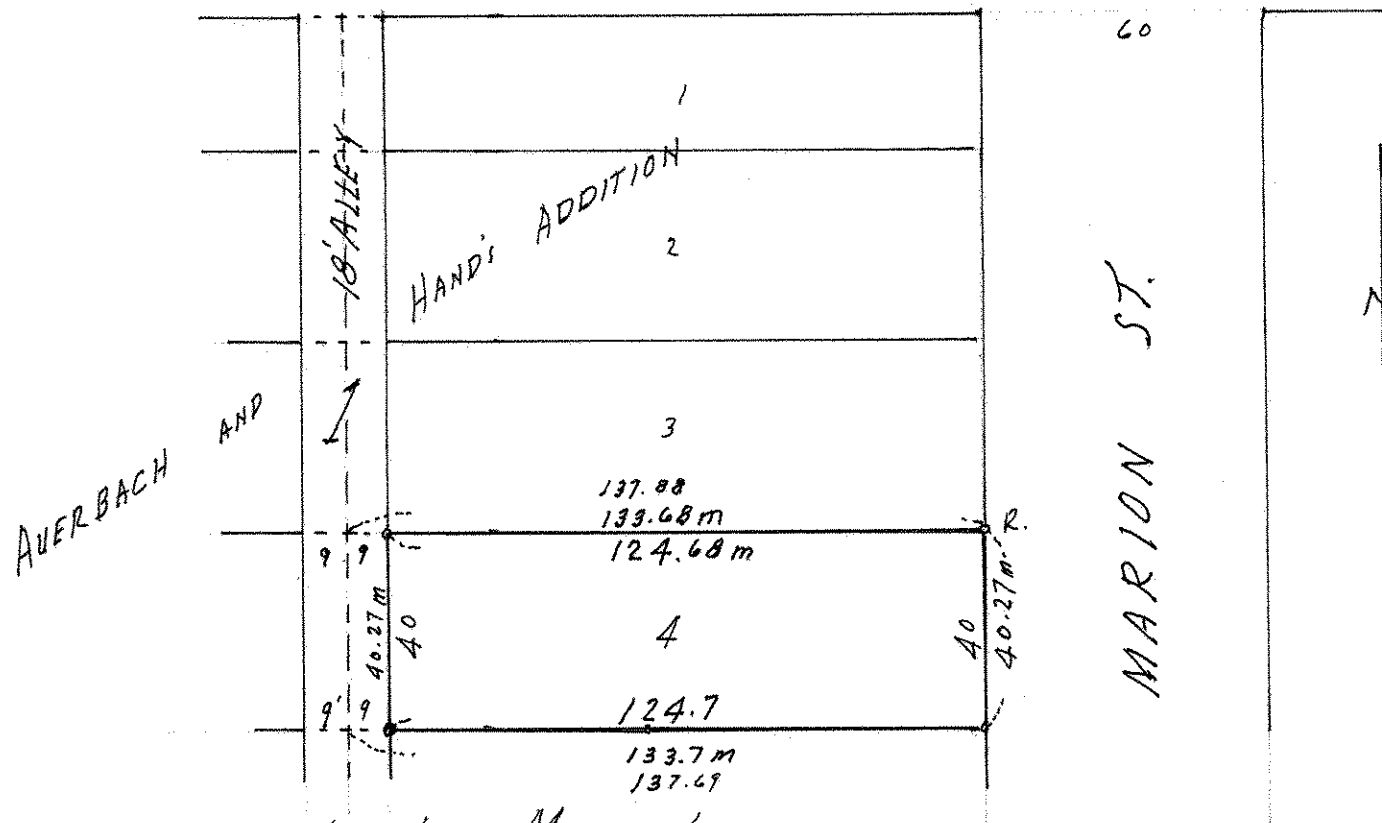
Scale.....*1" = 40'*.....

By *Charles O. Georgi*
REGISTERED LAND SURVEYOR

Description:

*Lot 4, except the West 9 feet for alley as opened.
Block 1
Averbach and Hand's Addition*

60 MARYLAND AVE.



*o Denotes Iron Monument
m Denotes prorated measure for equally
distributing the excess and shortage in distances.*