

FROM THE OFFICE OF

# CHARLES O. GEORGI COMPANY

2215 West County Road B

Saint Paul, Minnesota 55113

REGISTERED CIVIL ENGINEER AND LAND SURVEYOR

## Certificate of Survey

I Hereby Certify that this plat shows a survey made by me of the property described on this plat, and that the corners are correctly placed as shown, and that all locations have been correctly shown.

Surveyed For *J. H. N. GOMBOLD*

Date *November 1960*

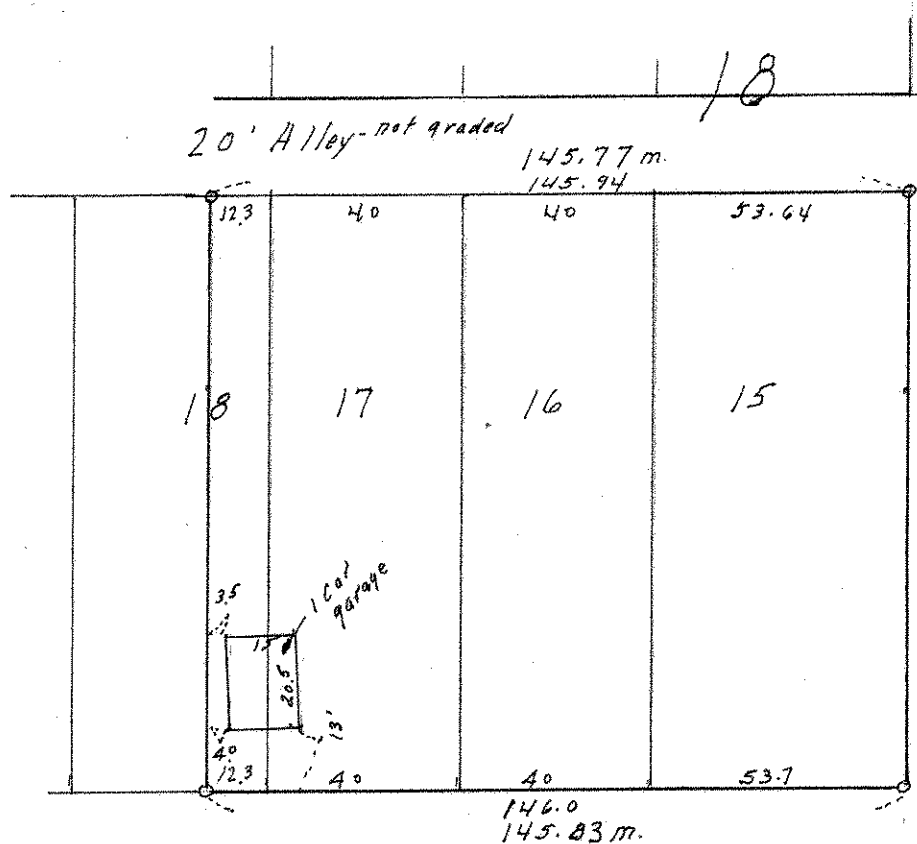
Scale *1" = 40' 40*

By *Charles O. Georgi*  
REGISTERED LAND SURVEYOR

**Description:**

*Lots 15, 16, 17 and the  
East 12.3 feet of Lot 18,  
Block 18  
FOURTH ADDITION TO N. ST. PAUL.*

*o Denotes Iron Monument  
m - Denotes prorated Measurement  
for shortage in block.*



66

54

SECOND

60

N