

FROM THE OFFICE OF

CHARLES O. GEORGI COMPANY

2215 West County Road B

Saint Paul, Minnesota 55113

REGISTERED CIVIL ENGINEER AND LAND SURVEYOR

Certificate of Survey

I Hereby Certify that this plat shows a survey made by me of the property described on this plat, and that the corners are correctly placed as shown, and that all locations have been correctly shown.

Surveyed For *Mrs. E. W. Hanson*

Date *May 1968*

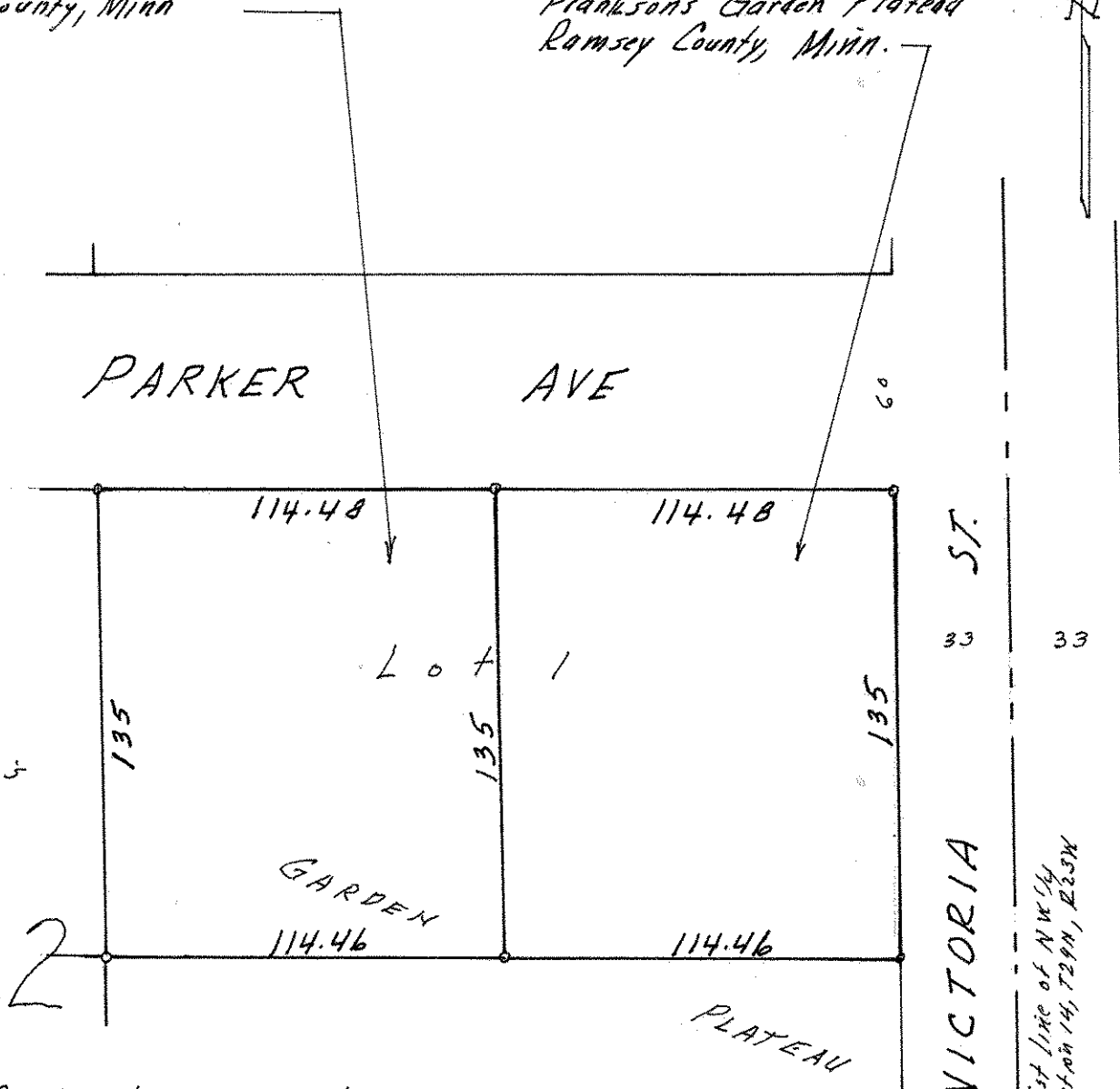
Scale *1" = 50'*

By *Charles O. Georgi*
REGISTERED LAND SURVEYOR

Description:

*The West 1/2 of Lot 1,
Block 2
Frankson's Garden Plateau
Ramsey County, Minn*

*Description:
The East 1/2 of Lot 1,
Block 2
Frankson's Garden Plateau
Ramsey County, Minn.*



FRANKSON'S

2

VICTORIA ST.

*East line of NW 1/4
Section 14, T29N, R25W*

o - Denotes Iron monument.