

FROM THE OFFICE OF

# CHARLES O. GEORGI COMPANY

2215 West County Road B Saint Paul, Minnesota 55113

REGISTERED CIVIL ENGINEER AND LAND SURVEYOR

## Certificate of Survey

I Hereby Certify that this plat shows a survey made by me of the property described on this plat, and that the corners are correctly placed as shown, and that all locations have been correctly shown. Corner irons on West line set on May 1964.

Surveyed For Parranto Bros.

Date May 1968

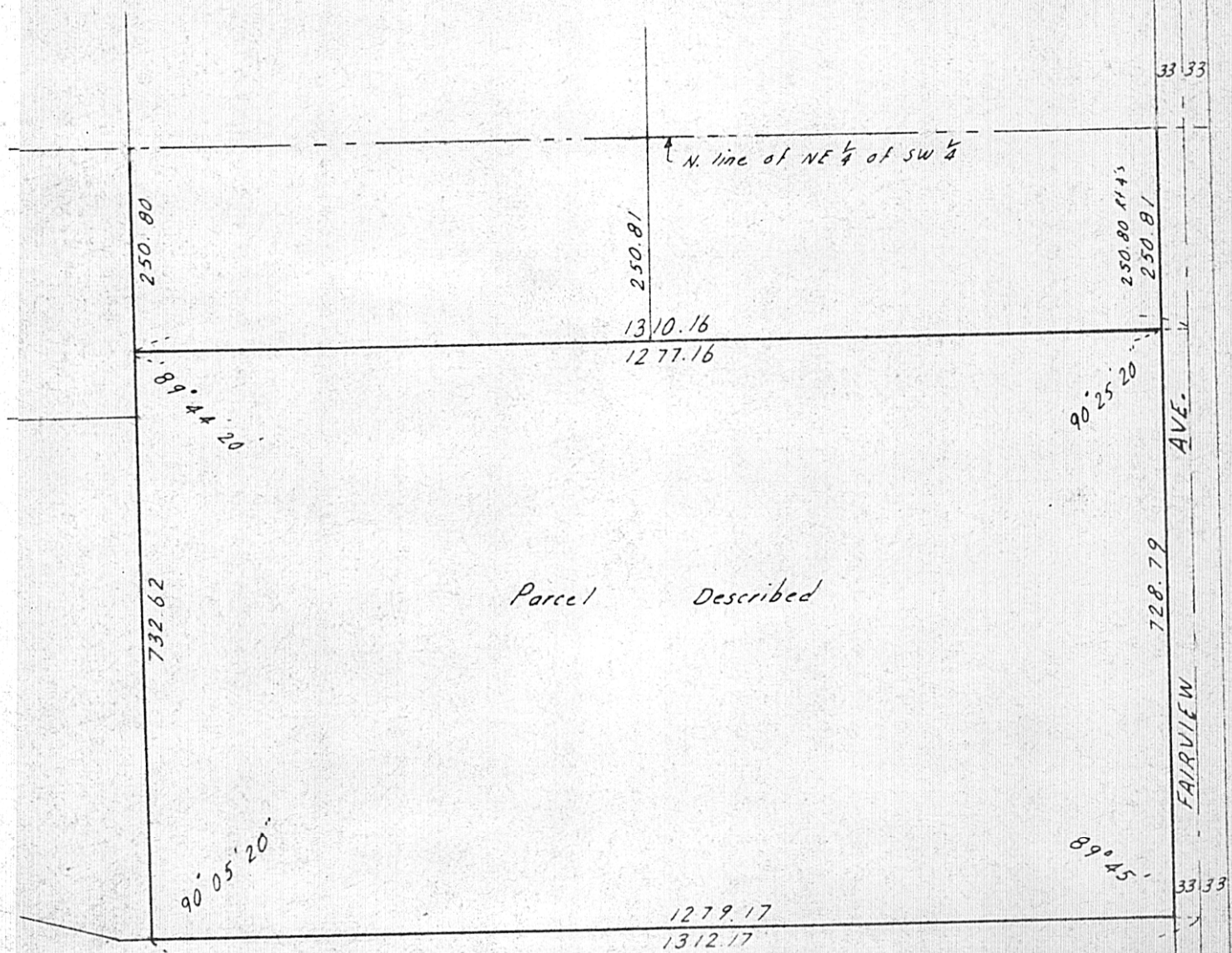
Scale 1" = 200'

By Charles O. Georgi  
REGISTERED LAND SURVEYOR

### Description:

The NE 1/4 of the SW 1/4 of Section 9, T29N, R23W, lying North of State Trunk Highway No. 36, except the North 250.80 feet thereof; subject to Fairview Ave., and to drainage easement, sewer easement and other public utility easements of record.

Contains 21.441 acres (excluding Fairview Avenue)



TRUNK HIGHWAY NO. 36

