

FROM THE OFFICE OF

# CHARLES O. GEORGI COMPANY

2215 West County Road B

Saint Paul, Minnesota 55113

REGISTERED CIVIL ENGINEER AND LAND SURVEYOR

## Certificate of Survey

I Hereby Certify that this plat shows a survey made by me of the property described on this plat, and that the corners are correctly placed as shown, and that all locations have been correctly shown. *File*

Surveyed For *Globe Builders - Bentley*

Date *Sept 1967*

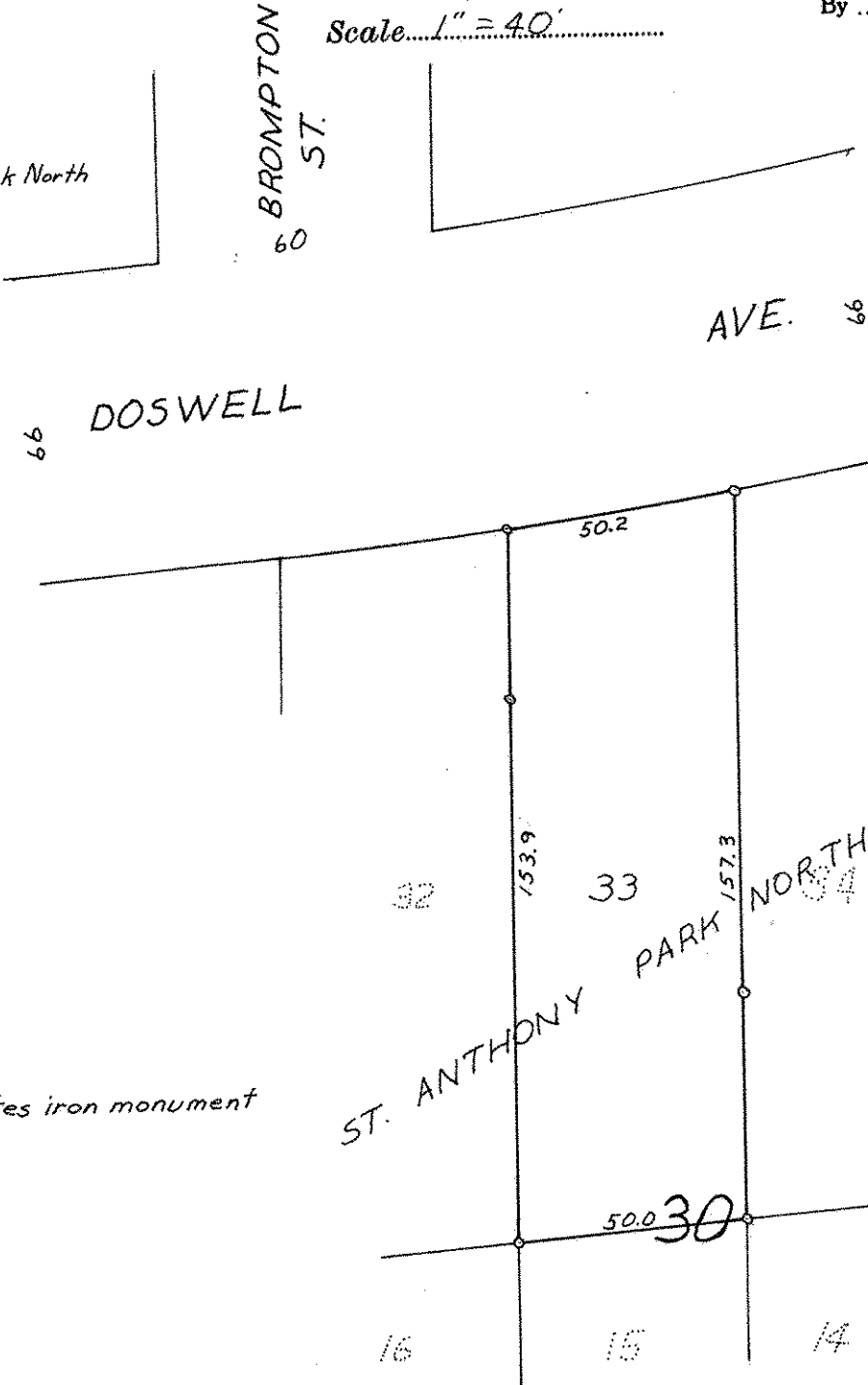
Scale *1" = 40'*

By

*Charles O. Georgi*  
REGISTERED LAND SURVEYOR

**Description:**

Lot 33  
Block 30  
St. Anthony Park North



*o denotes iron monument*