

FROM THE OFFICE OF

CHARLES O. GEORGI COMPANY

2215 West County Road B

Saint Paul 8, Minnesota

REGISTERED CIVIL ENGINEER AND LAND SURVEYOR

Certificate of Survey

I Hereby Certify that this plat shows a ~~building location~~ survey made by me on the property described on this plat, and that all locations, have been correctly shown, and that corners are correctly placed as shown.

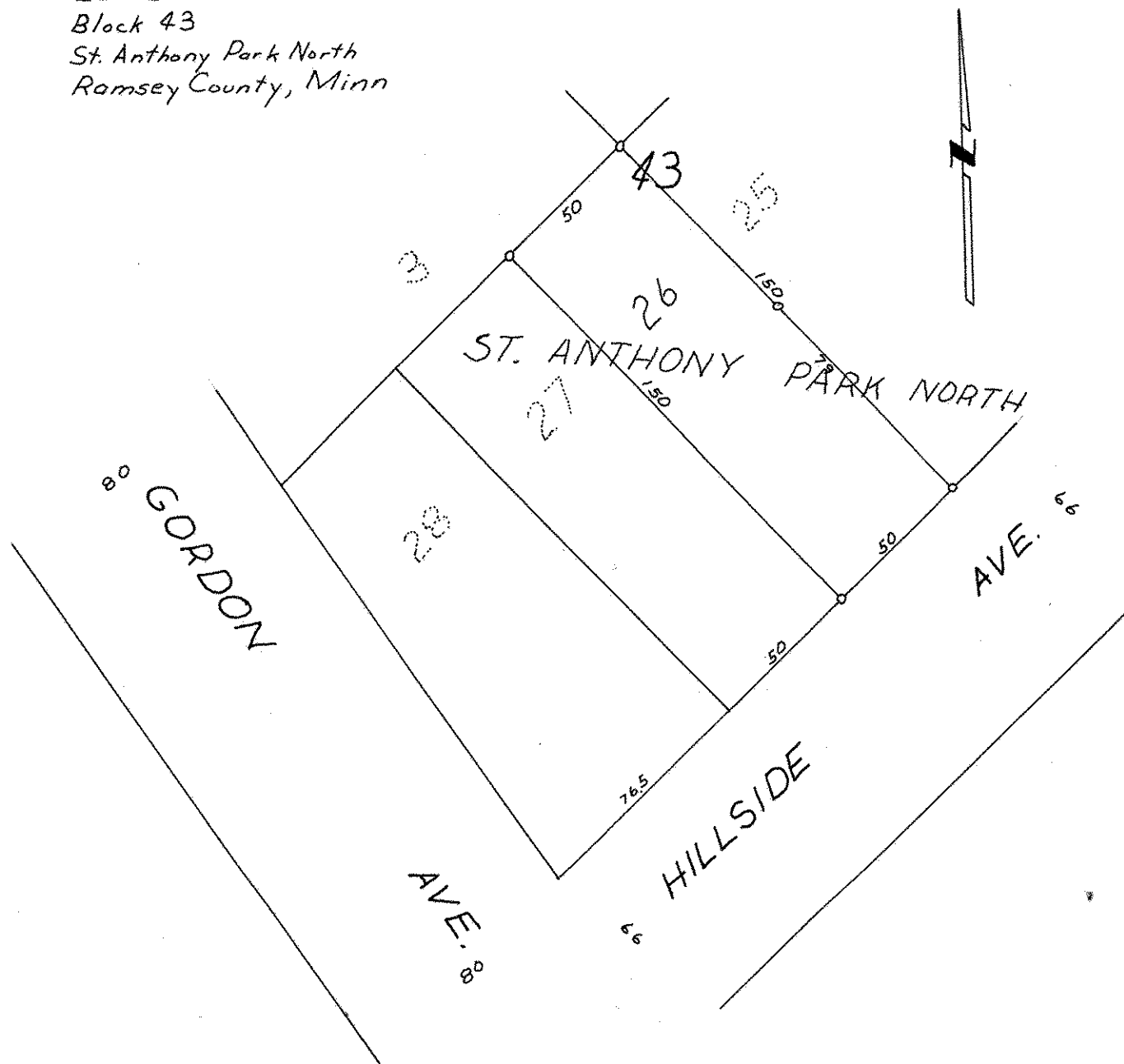
Date August 1967

Scale 1" = 50'

By *Charles O. Georgi*
REGISTERED LAND SURVEYOR

L. Anderson

Description: Lot 26
Block 43
St. Anthony Park North
Ramsey County, Minn



o denotes iron monument