

FROM THE OFFICE OF

CHARLES O. GEORGI COMPANY

2215 West County Road B

Saint Paul, Minnesota 55113

REGISTERED CIVIL ENGINEER AND LAND SURVEYOR

Certificate of Survey

I Hereby Certify that this plat shows a survey made by me of the property described on this plat, and that the corners are correctly placed as shown, and that all locations have been correctly shown.

Surveyed For^oCrank.....

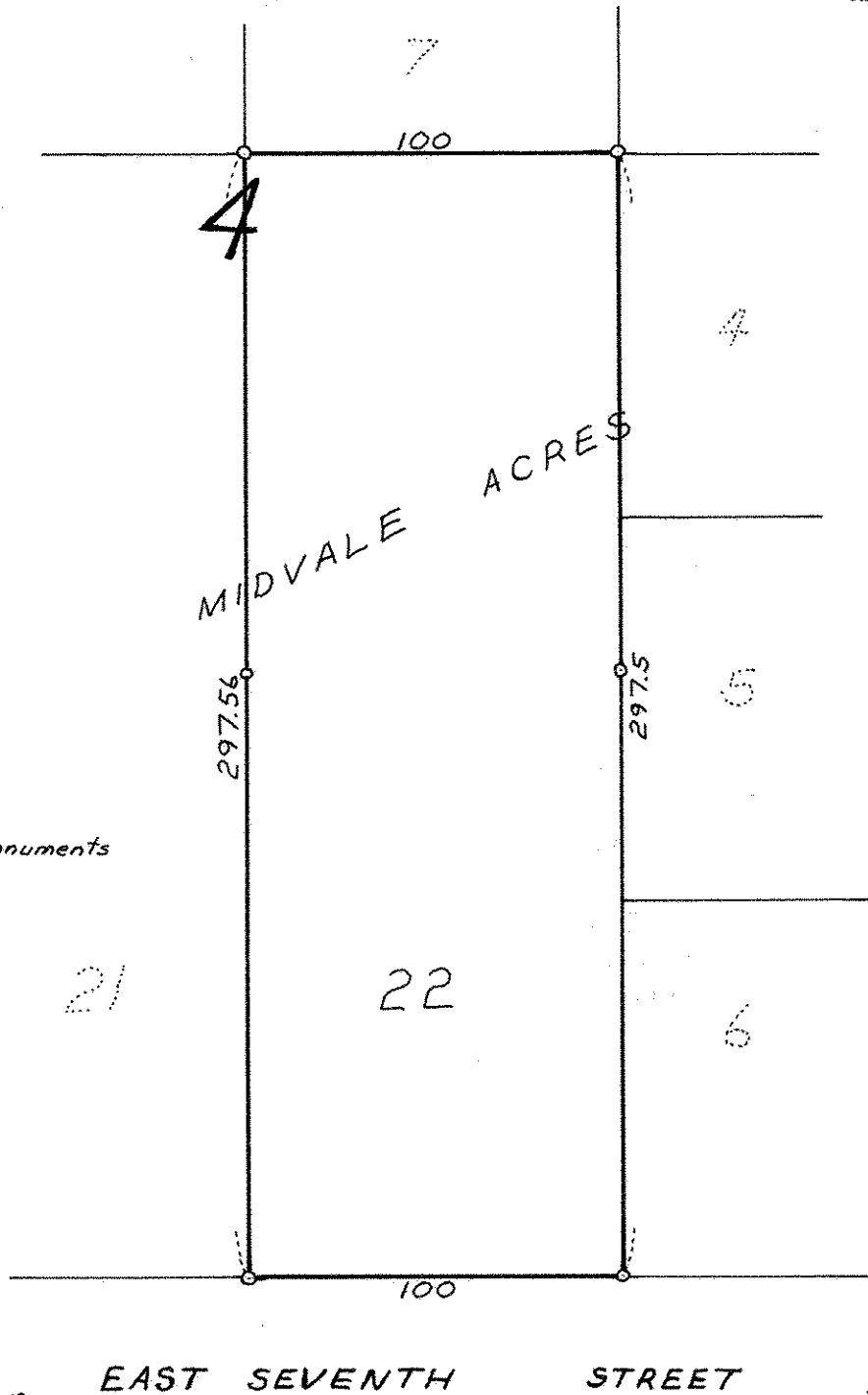
Date Sept. 1967

Scale 1" = 50'

By Charles O. Georgi
REGISTERED LAND SURVEYOR

Description:

Lot 22
Block 4
Midvale Acres
Ramsey County



o denotes iron monuments