

NE 14 29 22

FROM THE OFFICE OF

CHARLES O. GEORGI COMPANY

2215 West County Road B

Saint Paul, Minnesota 55113

REGISTERED CIVIL ENGINEER AND LAND SURVEYOR

Certificate of Survey

I Hereby Certify that this plat shows a survey made by me of the property described on this plat, and that the corners are correctly placed as shown, and that all locations have been correctly shown.

Surveyed For *Harry Lyon*

Date *Sept. 1967*

Scale *1" = 40'*

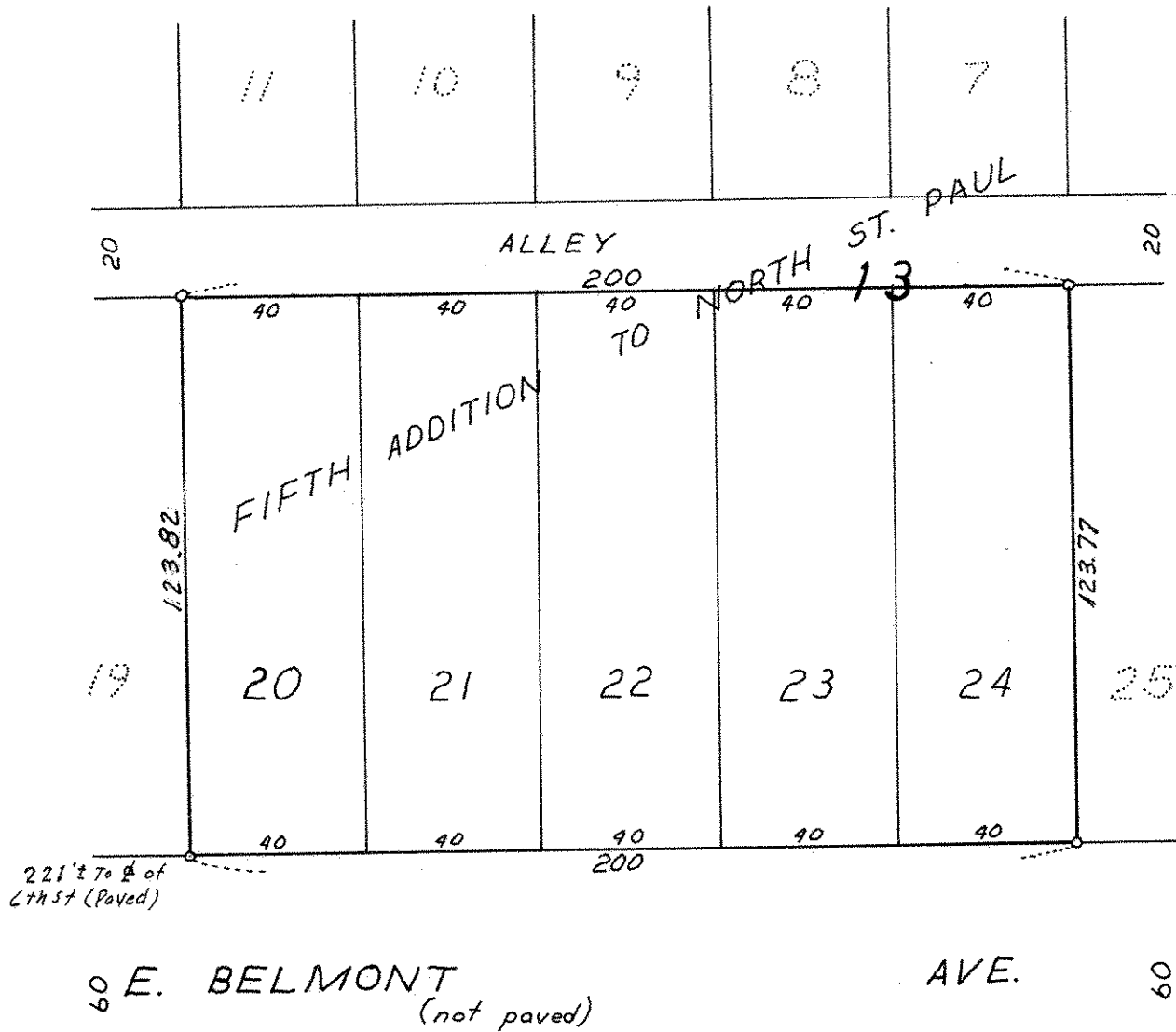
By *Charles O. Georgi*
REGISTERED LAND SURVEYOR

Description:

Lots 20, 21, 22, 23, and 24

Block 13

Fifth Addition to North St. Paul



o denotes iron monument