


FROM THE OFFICE OF

CHARLES O. GEORGI COMPANY

2215 West County Road B

Saint Paul, Minnesota 55113

REGISTERED CIVIL ENGINEER AND LAND SURVEYOR



Certificate of Survey

I Hereby Certify that this plat shows a survey made by me of the property described on this plat, and that the corners are correctly placed as shown, and that all locations have been correctly shown.

Surveyed For JOHN MARSHALL

Date May 1966

Scale 1" = 50'

By

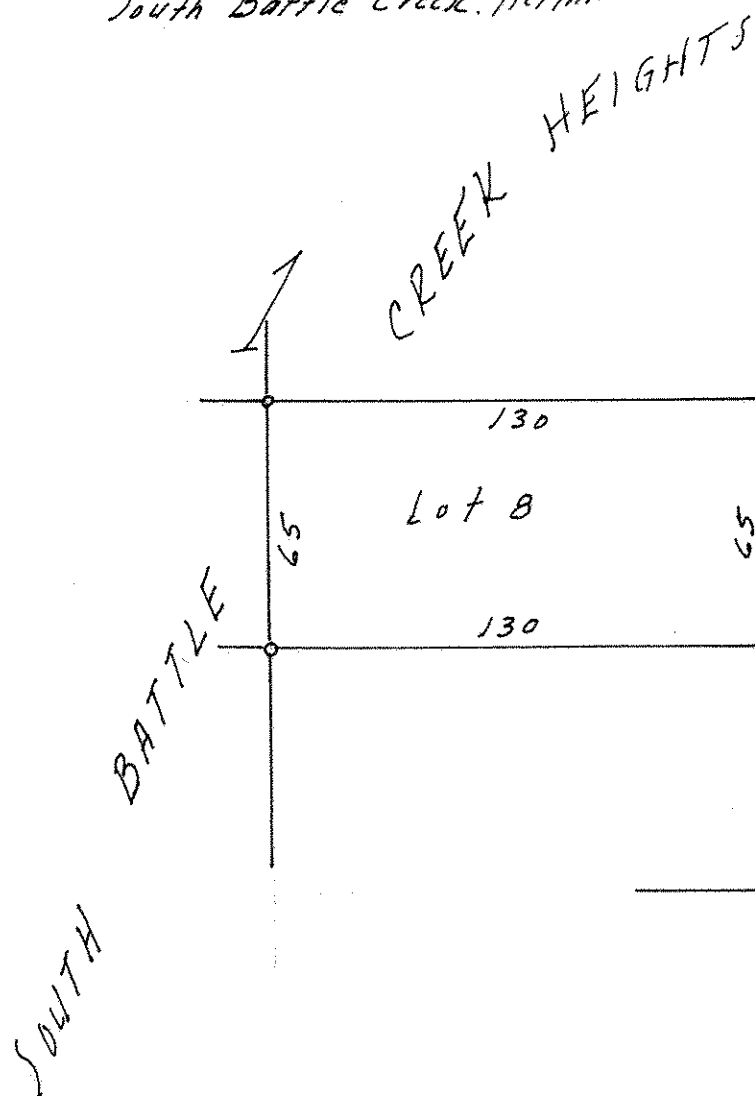
Charles O. Georgi
REGISTERED LAND SURVEYOR

Description:

Lot 8

Block 1

South Battle Creek Heights



o Denotes Iron Monument.