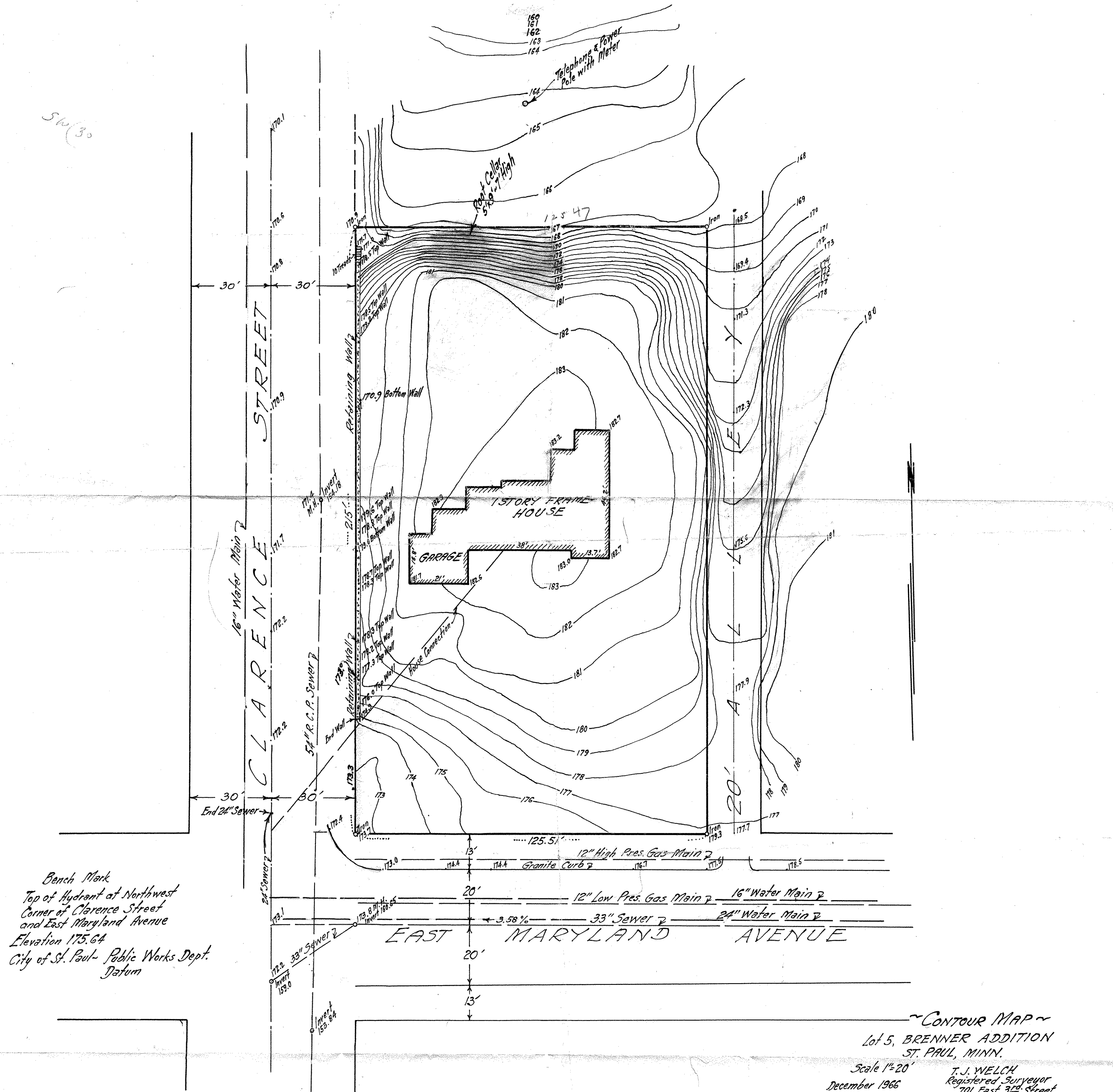


SW 30



Bench Mark
 Top of Hydrant at Northwest
 Corner of Clarence Street
 and East Maryland Avenue
 Elevation 175.64
 City of St. Paul - Public Works Dept.
 Datum

~ CONTOUR MAP ~
 Lot 5, BRENNER ADDITION
 ST. PAUL, MINN.
 Scale 1"=20'
 December 1966
 T. J. WELCH
 Registered Surveyor
 701 East 31st Street
 ST. PAUL, MINN. 55106
 TEL. 776-0640

323/70