

SW 332922

FROM THE OFFICE OF

CHARLES O. GEORGI COMPANY

2215 West County Road B

Saint Paul, Minnesota 55113

REGISTERED CIVIL ENGINEER AND LAND SURVEYOR

Certificate of Survey

I Hereby Certify that this plat shows a survey made by me of the property described on this plat, and that the corners are correctly placed as shown, and that all locations have been correctly shown.

Surveyed For *Arlo Udstuen*

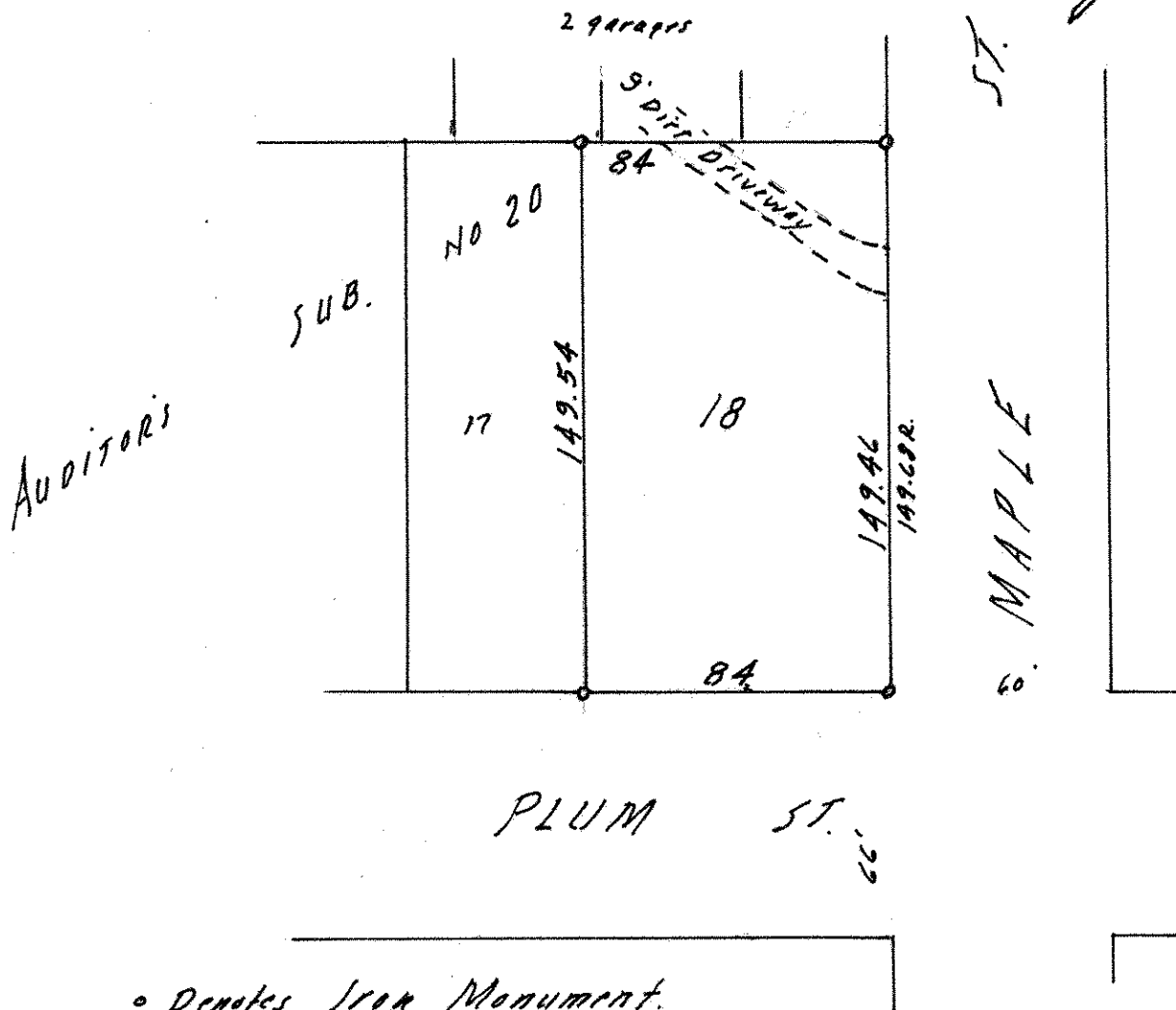
Date *April 1966*

Scale *1" = 50'*

By *Charles O. Georgi*
REGISTERED LAND SURVEYOR

Description:

*Lot 18
Auditor Subdivision No 20
Ramsey County, Minn.*



o Denotes Iron Monument.
R. Denotes Record distance on plot.