

SW 2, 29, 22

FROM THE OFFICE OF

# CHARLES O. GEORGI COMPANY

2215 West County Road B

Saint Paul, Minnesota 55113

REGISTERED CIVIL ENGINEER AND LAND SURVEYOR

## Certificate of Survey

I Hereby Certify that this plat shows a survey made by me of the property described on this plat, and that the corners are correctly placed as shown, and that all locations have been correctly shown.

Surveyed For *Ward Foster*.....

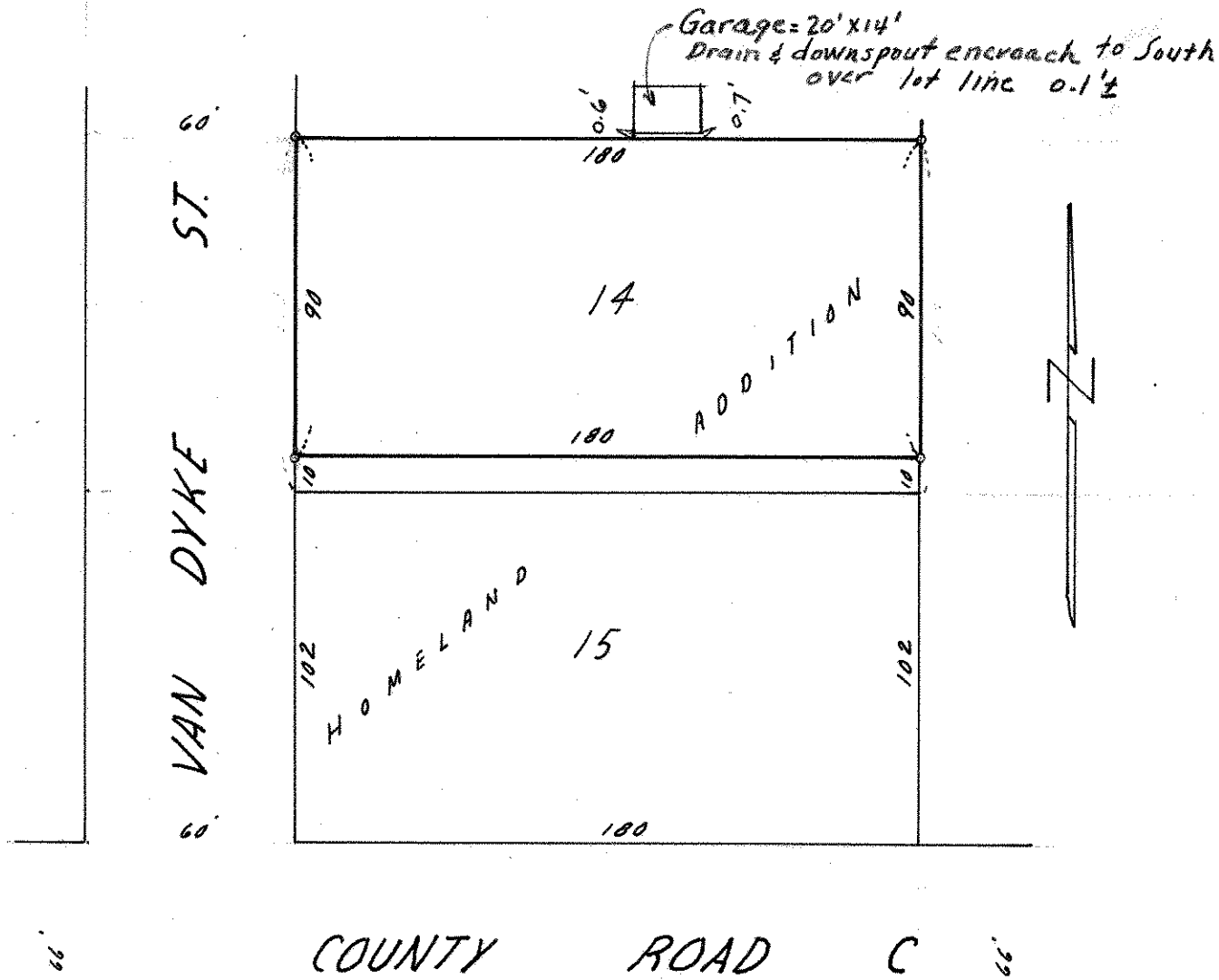
Date *January 1966*.....

Scale *1" = 50'*.....

By *Charles O. Georgi*  
REGISTERED LAND SURVEYOR

### Description:

*The North 90 feet of Lot 14  
Homeland Addition  
Ramsey County, Minn*



o Denotes Iron Monument