

FROM THE OFFICE OF

CHARLES O. GEORGI COMPANY

2215 West County Road B

Saint Paul, Minnesota 55113

REGISTERED CIVIL ENGINEER AND LAND SURVEYOR



**Certificate
of Survey**

I Hereby Certify that this plat shows a survey made by me of the property described on this plat, and that the corners are correctly placed as shown, and that all locations have been correctly shown.

Surveyed For STANLEY ELVEN

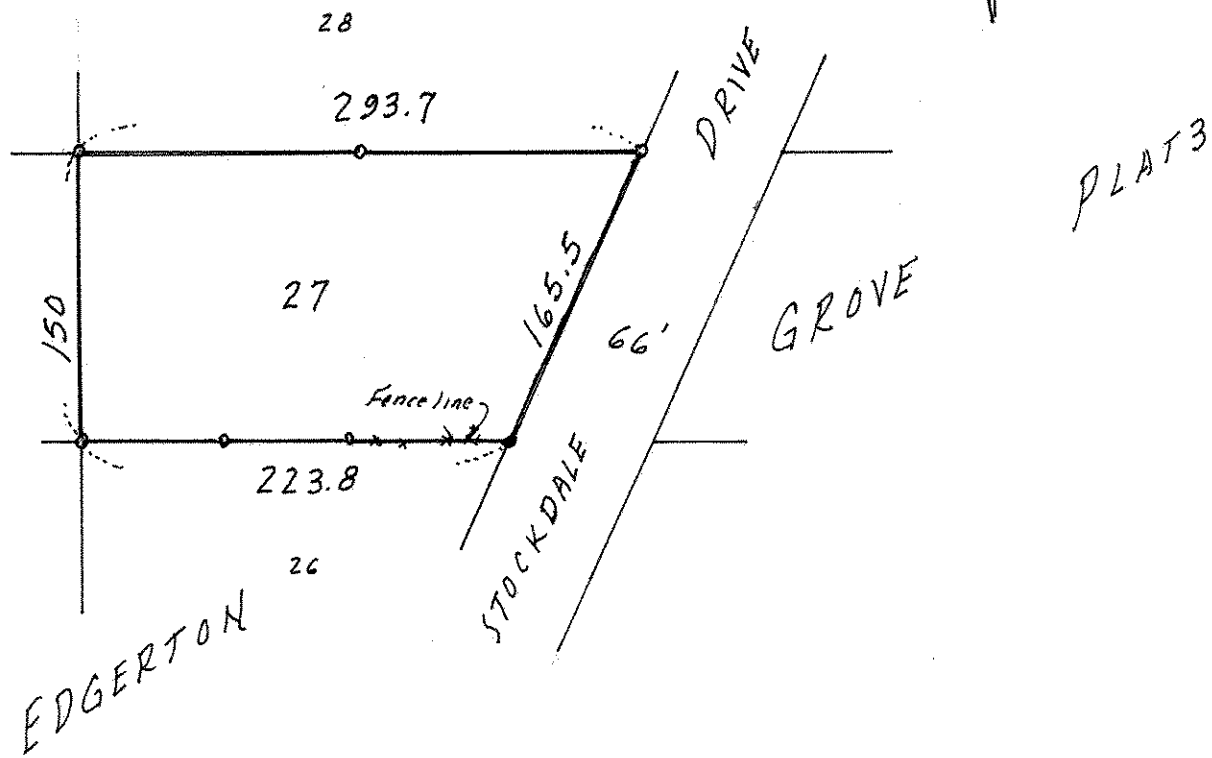
Date JUNE 1966

Scale 1" = 100'

By Charles O. Georgi
REGISTERED LAND SURVEYOR

Description:

Lot 27
EDGERTON GROVE PLAT 3
Ramsey County, Minn.



o Denotes Iron Monument