

FROM THE OFFICE OF

CHARLES O. GEORGI COMPANY

2215 West County Road B

Saint Paul, Minnesota 55113

REGISTERED CIVIL ENGINEER AND LAND SURVEYOR



I Hereby Certify that this plat shows a survey made by me of the property described on this plat, and that the corners are correctly placed as shown, and that all locations have been correctly shown.

Surveyed For *Vincent Liesenfeld*

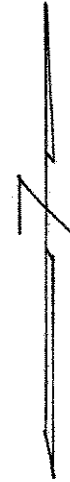
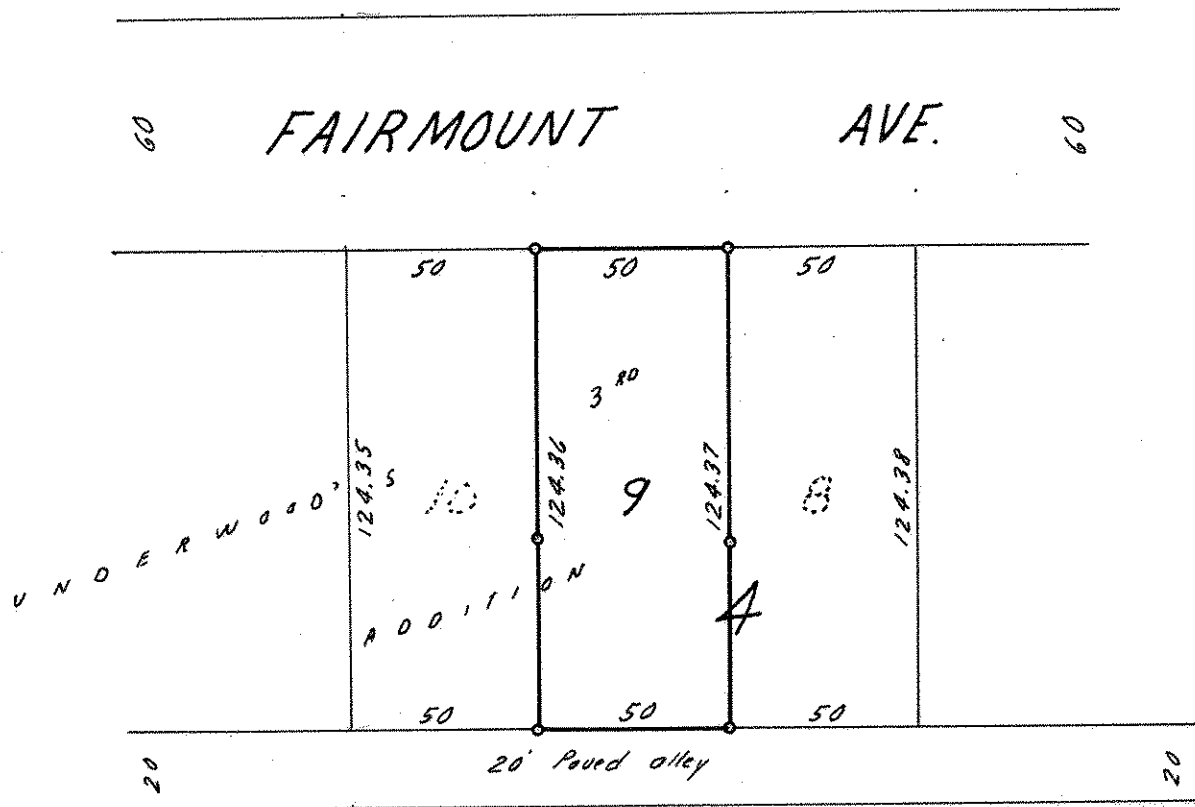
Date *March 1966*

Scale *1" = 50'*

By *Charles O. Georgi*
REGISTERED LAND SURVEYOR

Description:

*Lot 9
Block 4
Underwood's 3rd Addition to City of St. Paul*



o Denotes Iron Monument