

FROM THE OFFICE OF

CHARLES O. GEORGI COMPANY

2215 West County Road B

Saint Paul, Minnesota 55113

REGISTERED CIVIL ENGINEER AND LAND SURVEYOR

Certificate of Survey

I Hereby Certify that this plat shows a survey made by me of the property described on this plat, and that the corners are correctly placed as shown, and that all locations have been correctly shown.

Surveyed For Village of Roseville

Date July 7, 1966

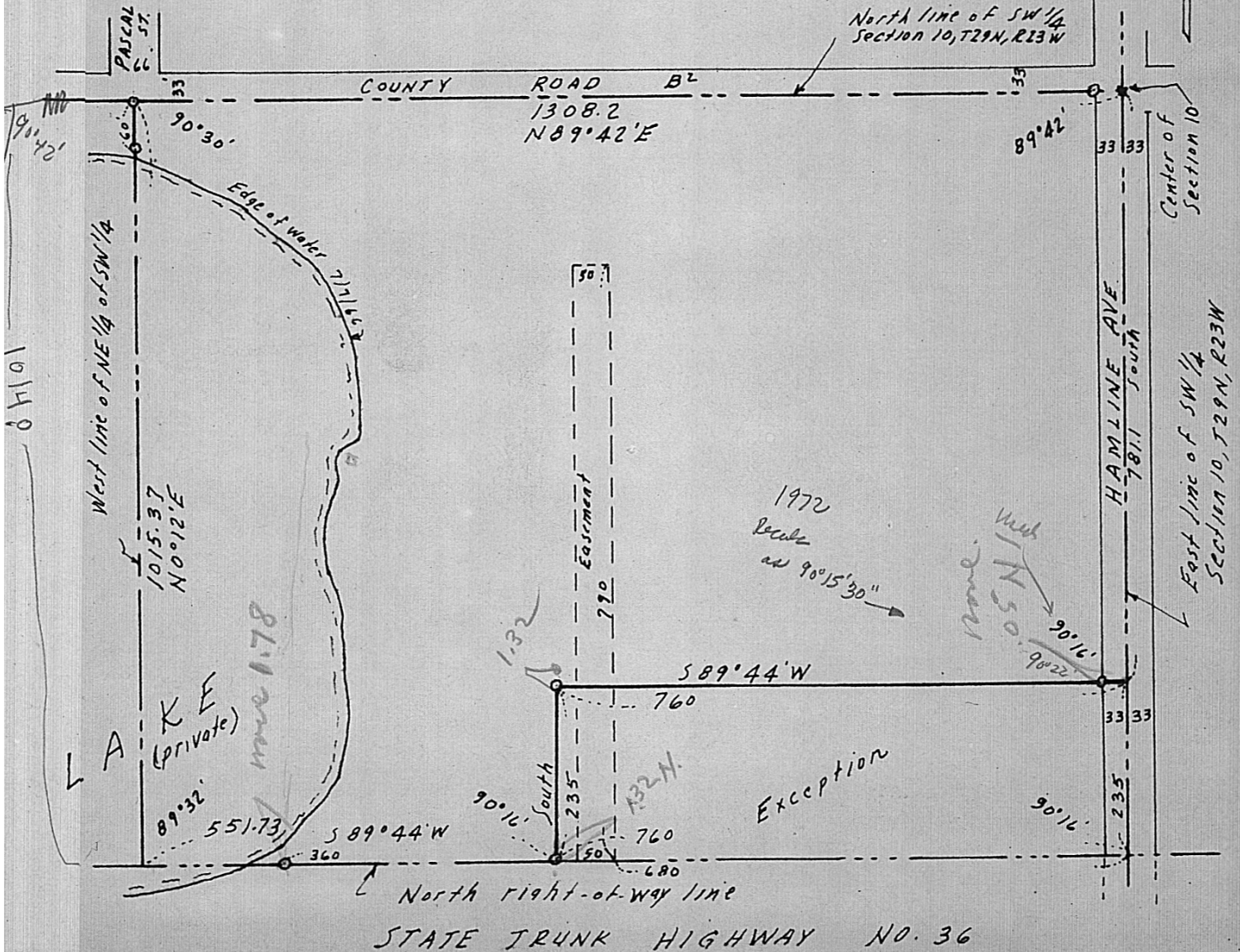
Scale 1" = 200'

By Charles O. Georgi
REGISTERED LAND SURVEYOR

Description:

All of the NE 1/4 of the SW 1/4 of Section 10, T29N, R23W lying North of the North right-of-way line of State Trunk Highway No. 36 except the South 235 feet of the East 760 feet thereof, subject to Hamline Ave. and to easements of record to Minnesota State Highway Department, all in Ramsey County, Minnesota.
Contains 26.445 Acres, more or less.

o - Denotes Iron pipe monument.



Meters and Bounds Description:

All that part of the NE 1/4 of the SW 1/4 of Section 10, T29N, R23W described as follows: beginning at the center of said Section 10, thence due South along the center line of Hamline Ave and the East line of the SW 1/4 of said Section 10 a distance of 781.1 feet, thence S 89° 44' W a distance of 760 feet, thence due South a distance of 235 feet, thence S 89° 44' W along the North right-of-way line of State Trunk Highway No. 36 a distance of 551.73 feet, thence N 0° 12' E along the West line of the NE 1/4 of the SW 1/4 of said Section 10 a distance of 1015.37 feet, thence N 89° 42' E along the North line of the SW 1/4 of said Section 10 a distance of 1308.2 feet to the point of beginning; subject to Hamline Ave. and to easements of record to Minnesota State Highway Department, all in Ramsey County, Minnesota;
contains 26.445 Acres, more or less.