

FROM THE OFFICE OF

# CHARLES O. GEORGI COMPANY

2215 West County Road B

Saint Paul 13, Minnesota

REGISTERED CIVIL ENGINEER AND LAND SURVEYOR



## Certificate of Survey

I Hereby Certify that this plat shows a survey made by me of the property described on this plat, and that the corners are correctly placed as shown, and that all locations have been correctly shown.

Surveyed For *Ed Vasey - John Monahan*

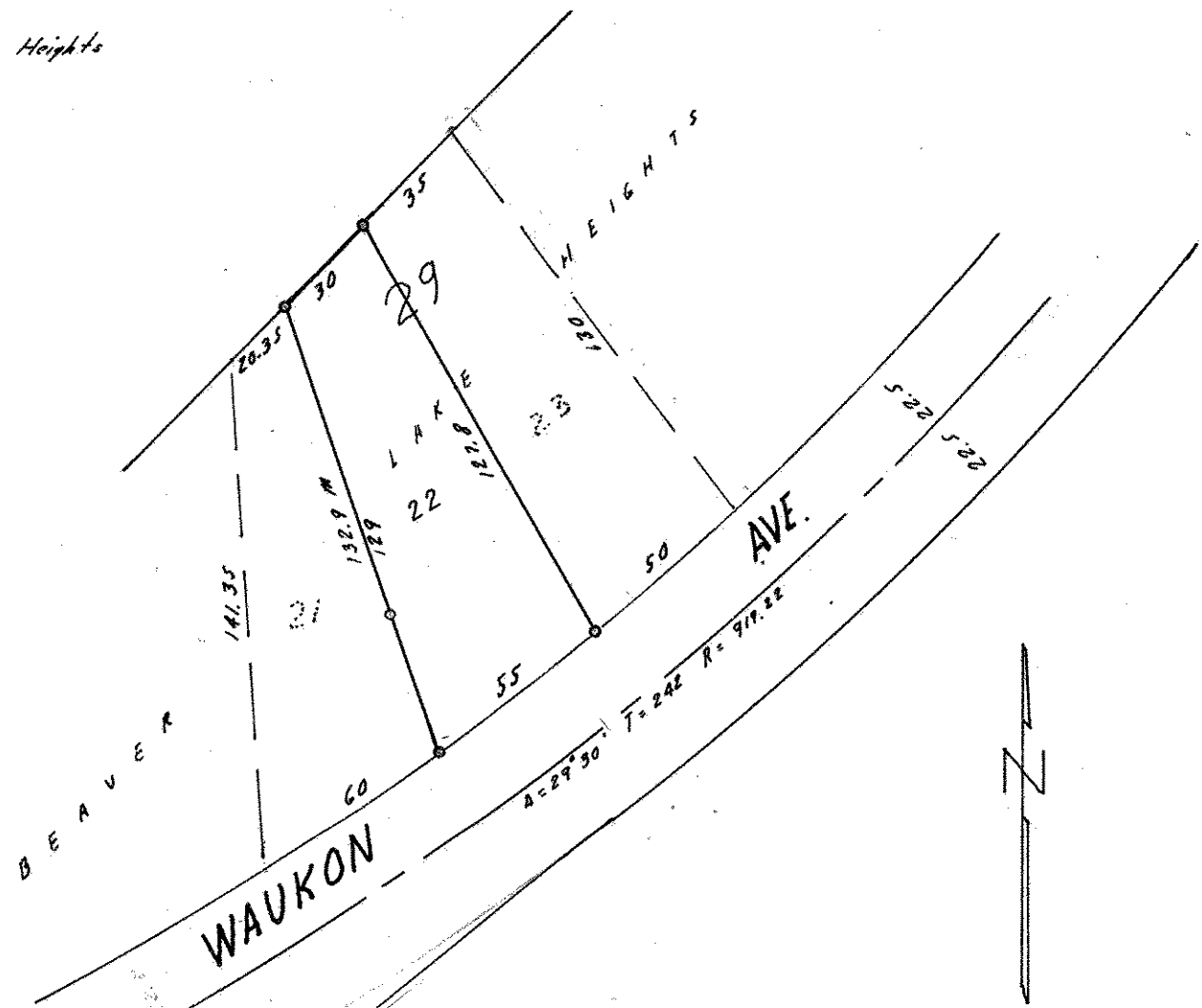
Date *June 1965*

Scale *1" = 50'*

By *Charles O. Georgi*  
REGISTERED LAND SURVEYOR

### Description:

*Lot 22  
Block 29  
Beaver Lake Heights*



o Denotes Iron Monument  
M Denotes Measured Distance