

24, 30, 22

FROM THE OFFICE OF

# CHARLES O. GEORGI COMPANY

2215 West County Road B Saint Paul 13, Minnesota

REGISTERED CIVIL ENGINEER AND LAND SURVEYOR



## Certificate of Survey

I Hereby Certify that this plat shows a survey made by me of the property described on this plat, and that the corners are correctly placed as shown, and that all locations have been correctly shown.

Surveyed For *Arthur Ritterhoff*

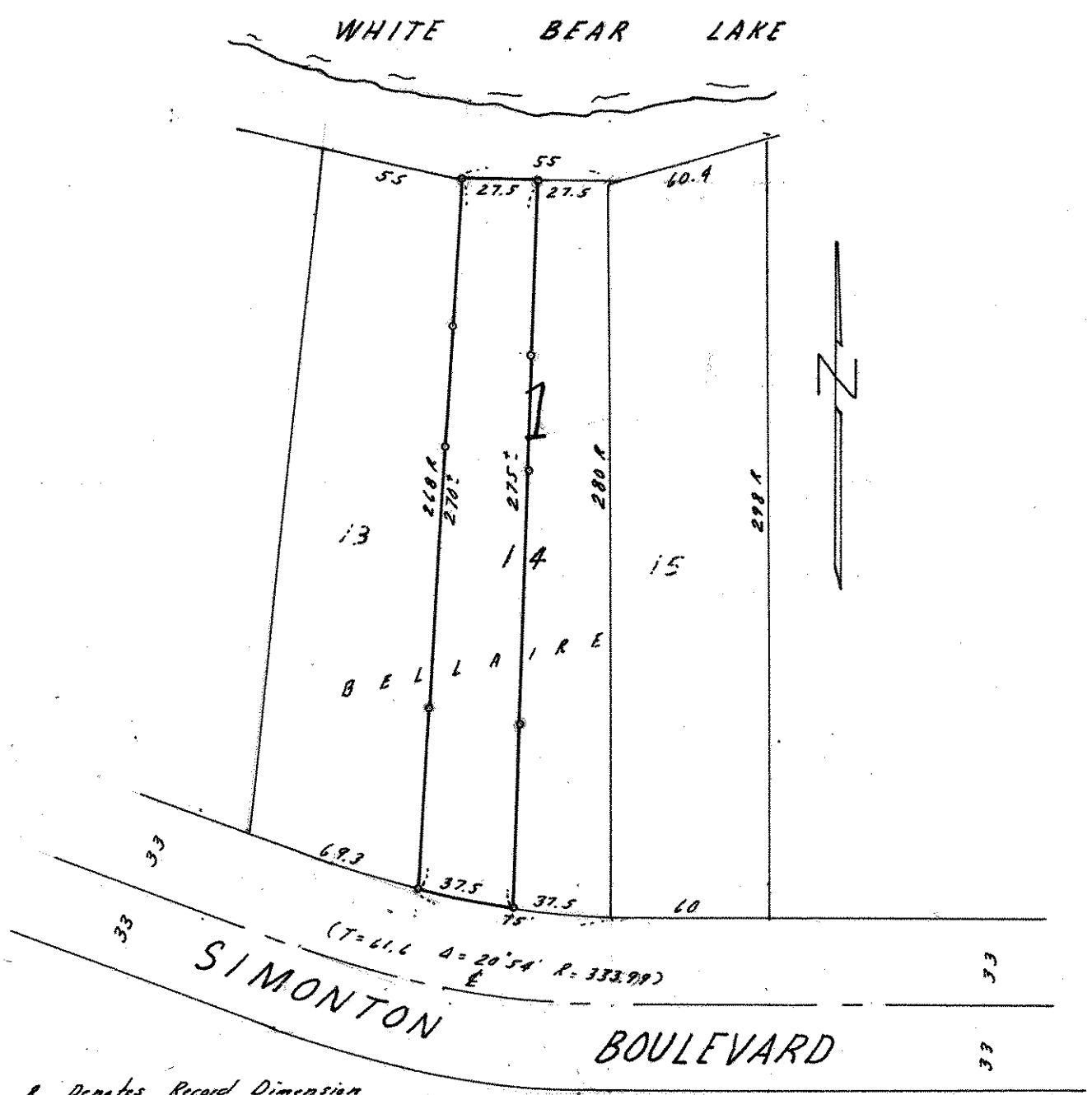
Date *August 1965*

Scale *1" = 60'*

By *Charles O. Georgi*  
REGISTERED LAND SURVEYOR

**Description:**

*The West 1/2 of Lot 14, Block 1, Belleaire*



R Denotes Record Dimension  
o Denotes Iron Monument