

SW 5, 30, 23

FROM THE OFFICE OF

CHARLES O. GEORGI COMPANY

2215 West County Road B

Saint Paul 13, Minnesota

REGISTERED CIVIL ENGINEER AND LAND SURVEYOR



Certificate of Survey

I Hereby Certify that this plat shows a survey made by me of the property described on this plat, and that the corners are correctly placed as shown, and that all locations have been correctly shown.

Surveyed For Ren Smith

Date January 1965

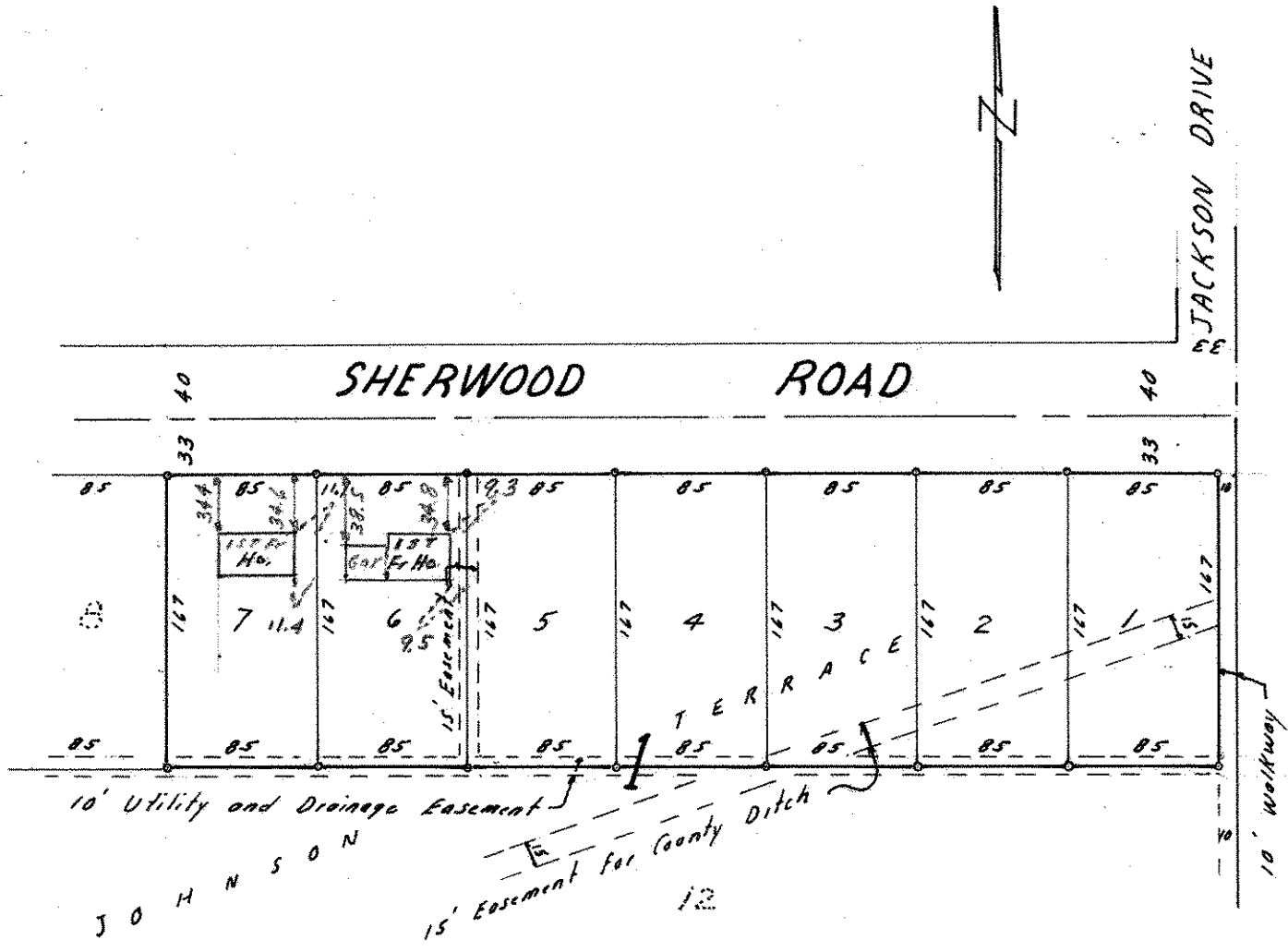
Scale 1" = 100'

Note: Added house locations
6/29/65

By Charles O. Georgi
REGISTERED LAND SURVEYOR

Description:

Lot 67 Block 1, Johnson Terrace



o Denotes Iron Monument