

FROM THE OFFICE OF

CHARLES O. GEORGI COMPANY

2215 West County Road B

Saint Paul 13, Minnesota

REGISTERED CIVIL ENGINEER AND LAND SURVEYOR



**Certificate
of Survey**

I Hereby Certify that this plat shows a survey made by me of the property described on this plat, and that the corners are correctly placed as shown, and that all locations have been correctly shown.

Surveyed For Becken Bldg Inc.

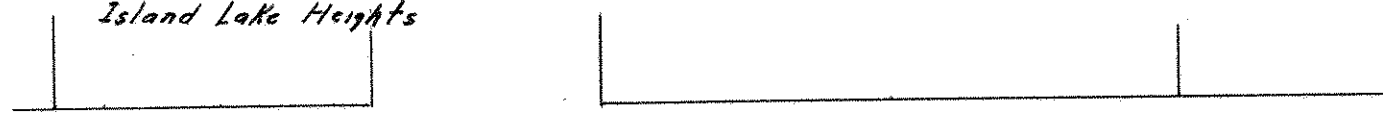
Date March 64

Scale 1" = 50'

By Charles O. Georgi
REGISTERED LAND SURVEYOR

Description:

Lot 1
Block 4
Island Lake Heights



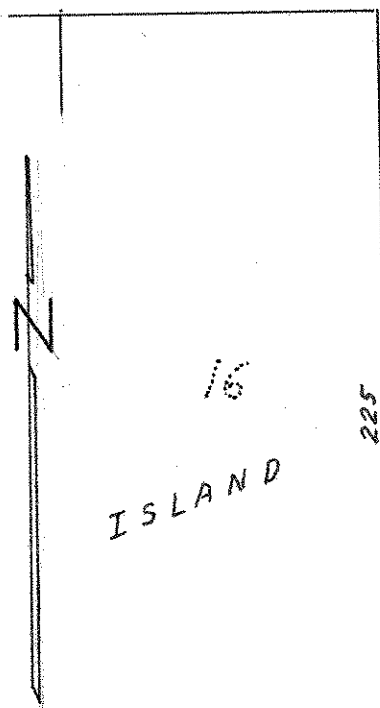
ISLAND

60'

LAKE

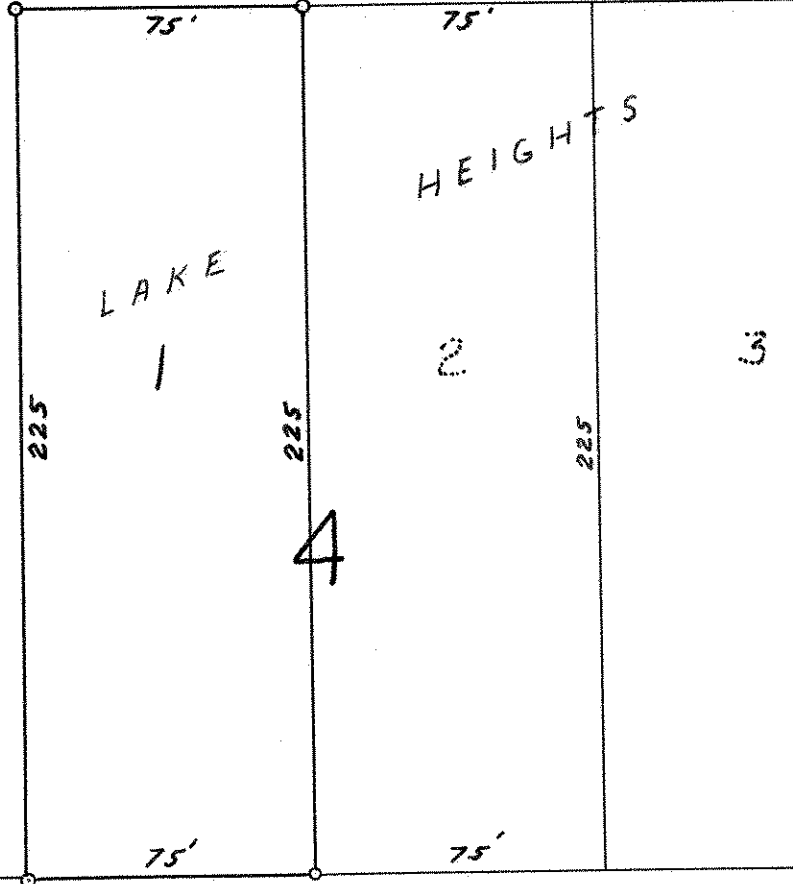
AVE.

8'



16
ISLAND

60'
CHATSWORTH ST.



LAKE
1

HEIGHTS
2

3

4

o Denotes Iron Monument