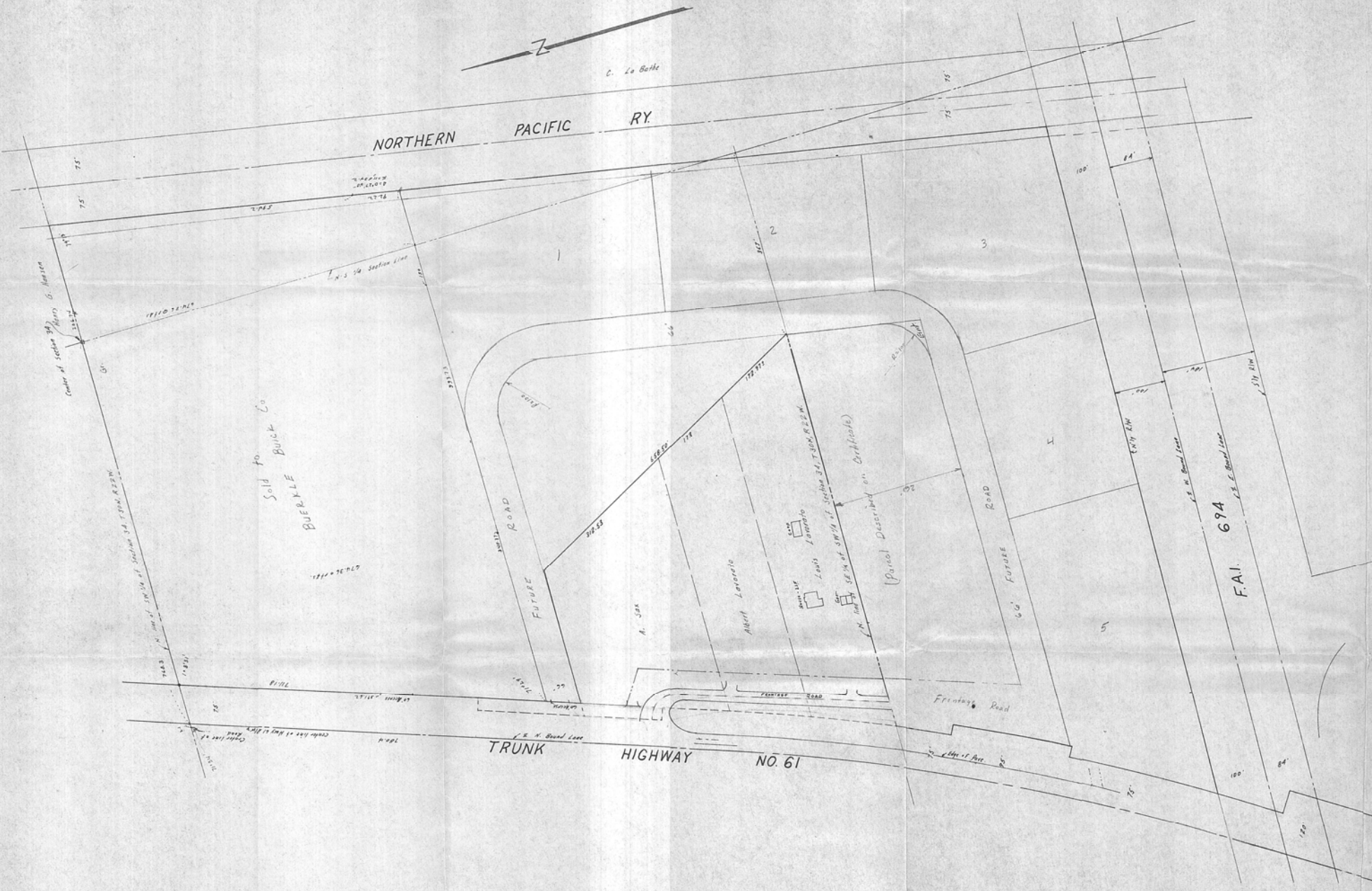




C. La Botz

NORTHERN PACIFIC RY.



DESCRIPTION:
That part of the South 1/4 of Section 34, T30N, R22W, lying West of Northern Pacific Railway and lying East of Trunk Highway No. 61 and lying North of F.A.I. 694, except that part of the NE 1/4 of the SW 1/4

[Handwritten initials]

STUDY PLAN
PART OF SW 1/4 OF SECTION 34, T30N, R22W

SCALE 1"=100'
(Approx. only - Traced from Hwy Map)

Charles O. Georgi Company
Civil Engineering & Land Surveying
2215 W. Co. Rd. B, St. Paul 13, Minn.
June 1964