

FROM THE OFFICE OF

CHARLES O. GEORGI COMPANY

2215 West County Road B

Saint Paul 8, Minnesota

MINNESOTA REGISTERED LAND SURVEYOR



Certificate of Survey

I Hereby Certify that this plat shows a survey made by me of the property described on this plat, and that the corners are correctly placed as shown, and that all locations, encroachments, etc., have been correctly shown.

For description and special note - see attached 8 1/2 x 11" Certificate.

Surveyed For LEXINGTON HOLDING CO.

Date July 1969

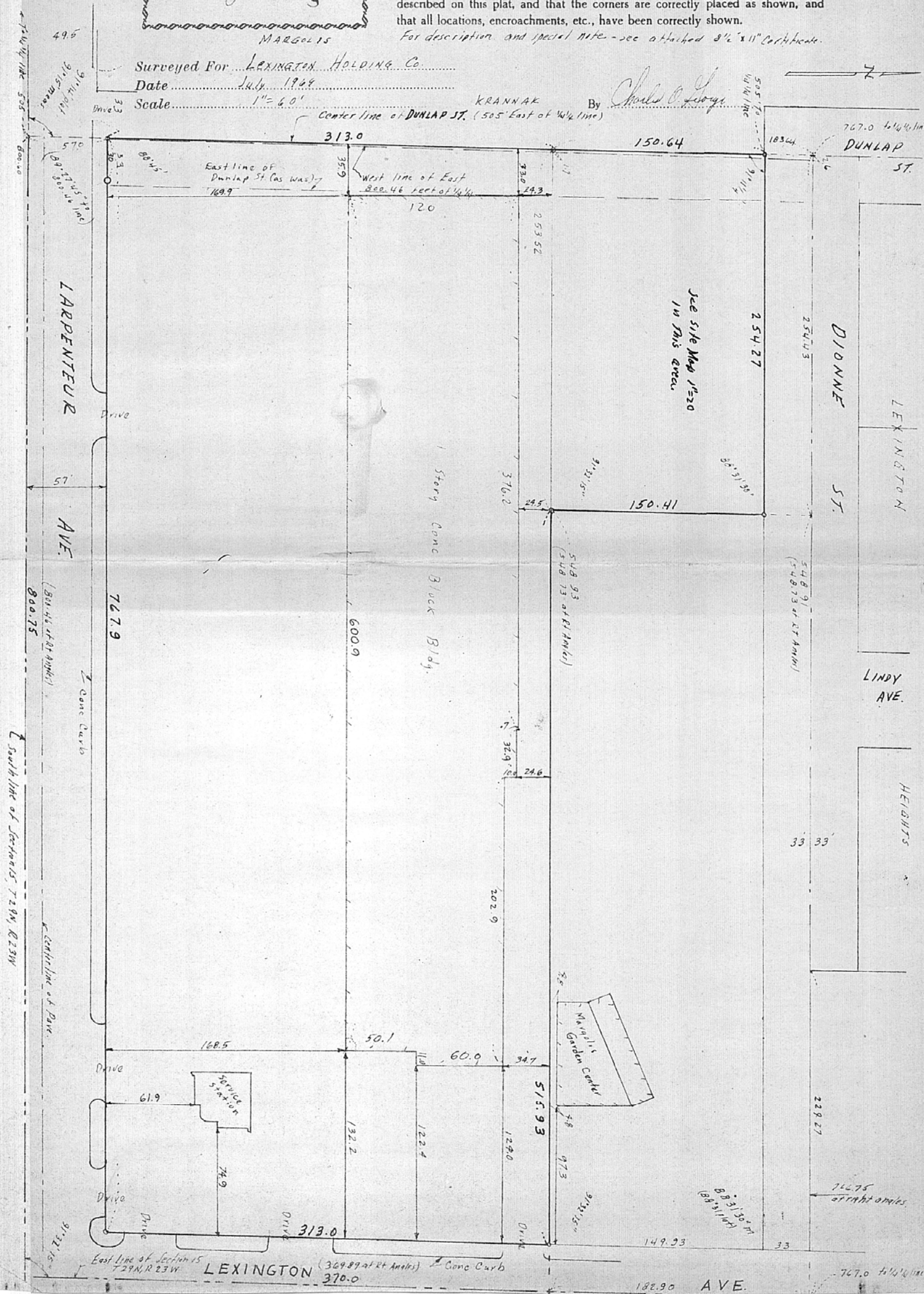
Scale 1" = 60'

KRANNAK

By

Charles O. Georgi

Center line of DUNLAP ST. (505' East of W 1/4 line)



East line of Section 15 T29N, R23W LEXINGTON (369.89 at Rt. Angle) Conc Curb 370.0

182.90 AVE.

767.0 to 1/4 line