

PLAT OF SURVEY

R. C. WOLFGRAM
REGISTERED LAND SURVEYOR
ST. PAUL, MINNESOTA

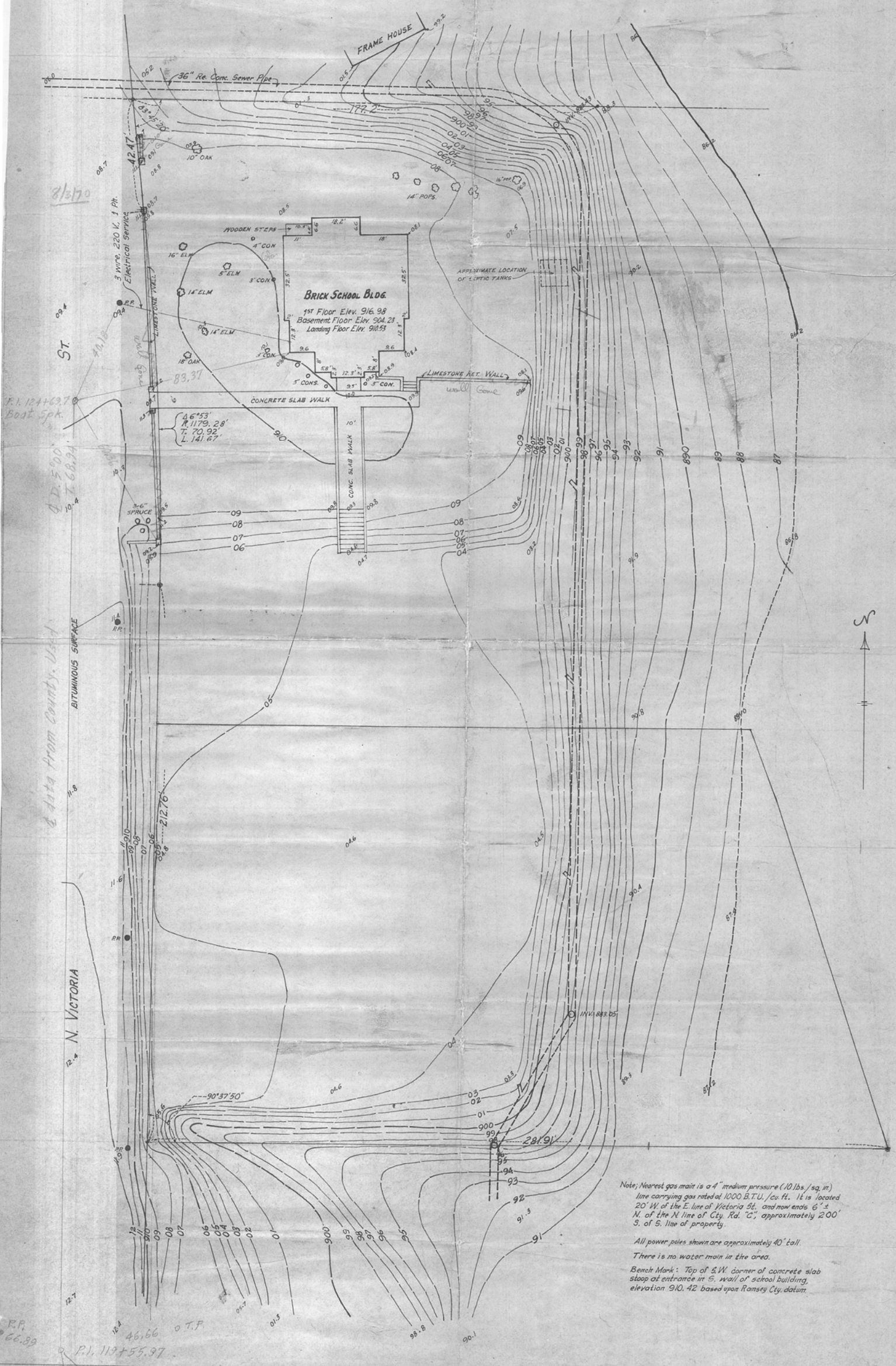
I hereby certify that this is a true and correct plat of a survey of the land shown and described hereon, and that any monuments or markers indicated hereon have been placed as shown, and that any improvements or physical conditions indicated hereon are as shown.

Surveyed February, 1964

Plat Scale - 1 in. = 20 ft.

Description - Parts of Government Lot 4, Sec. 2 - 29-23.

R. C. Wolfram



Note: Nearest gas main is a 4" medium pressure (10 lbs./sq. in.) line carrying gas rated at 1000 B.T.U./cu. ft. It is located 20' W. of the E. line of Victoria St. and now runs 6" ± N. of the N. line of City Rd. "C", approximately 200' S. of S. line of property.

All power poles shown are approximately 40' tall
There is no water main in the area.

Bench Mark: Top of S.W. corner of concrete slab stoop at entrance in S. wall of school building, elevation 910.42 based upon Ramsey City datum.

8/2/70

F.I. 1244027
Best Spk.

4 D. 500
10, 1, 68.94

4 data from County. Used

12-4 N. VICTORIA

R.P. 66.89

P.I. 119+55.97
Best Spk.

