

FROM THE OFFICE OF

# CHARLES O. GEORGI COMPANY

2215 West County Road B

Saint Paul 13, Minnesota

REGISTERED CIVIL ENGINEER AND LAND SURVEYOR

## Certificate of Survey

I Hereby Certify that this plat shows a survey made by me of the property described on this plat, and that the corners are correctly placed as shown, and that all locations have been correctly shown.

Surveyed For Antler Corp.

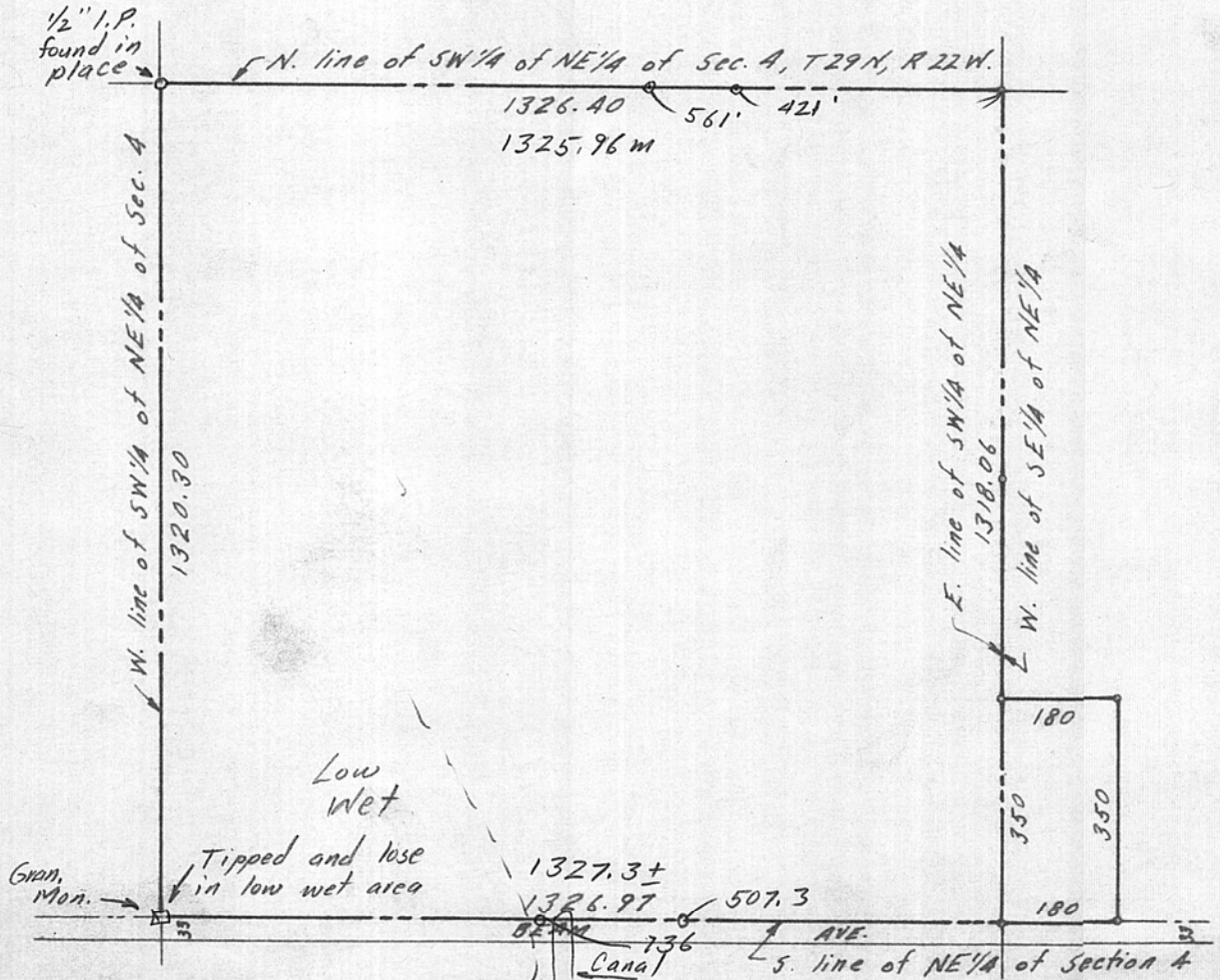
Date Aug. 1964

Scale 1" = 300'

By Charles O. Georgi  
REGISTERED LAND SURVEYOR

### Description:

The SW 1/4 of the NE 1/4 and the West 180 feet of the South 350 feet of the SE 1/4 of the NE 1/4 all in Section 4, T 29 N, R 22 W. Containing 41.624 Acres more or less.



• Denotes Iron Monument