

FROM THE OFFICE OF

**CHARLES O. GEORGI COMPANY**

2215 West County Road B

Saint Paul 13, Minnesota

REGISTERED CIVIL ENGINEER AND LAND SURVEYOR

# Certificate of Survey

I Hereby Certify that this plat shows a survey made by me of the property described on this plat, and that the corners are correctly placed as shown, and that all locations have been correctly shown.

Surveyed For E. E. COATES

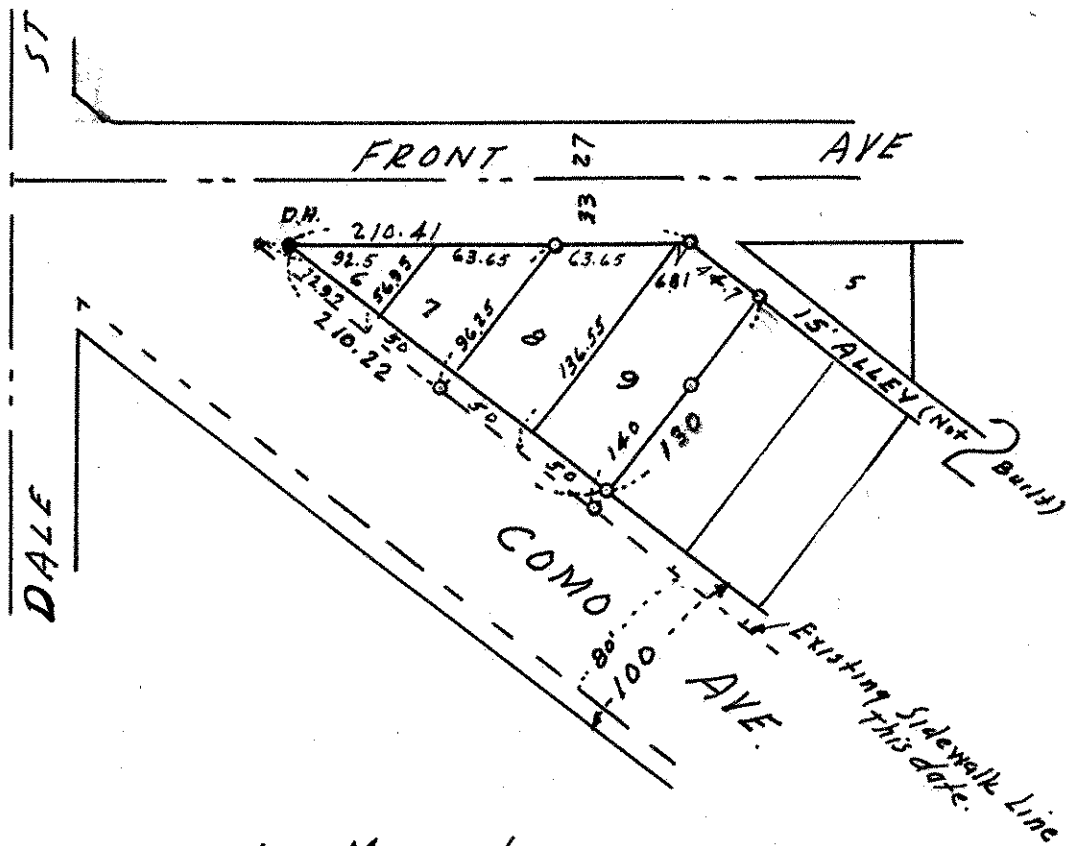
Date August 1963

Scale 1" = 100'

By Charles O. Georgi  
REGISTERED LAND SURVEYOR

**Description:**

Lots 6, 7, 8 and 9  
Block 2  
DENSLON'S ADDITION  
subject to widening of Como Ave.



o Denotes Iron Monument  
D.H. - Drill Hole in Concrete.