

5W19 29 22

FROM THE OFFICE OF

CHARLES O. GEORGI COMPANY

2215 West County Road B

Saint Paul 13, Minnesota

REGISTERED CIVIL ENGINEER AND LAND SURVEYOR

Certificate of Survey

I Hereby Certify that this plat shows a survey made by me of the property described on this plat, and that the corners are correctly placed as shown, and that all locations have been correctly shown.

Surveyed For J. Lynde - A.A.A. HOUSE MOVERS

Date May 2, 1963

Scale 1" = 50'

By Charles O. Georgi
REGISTERED LAND SURVEYOR

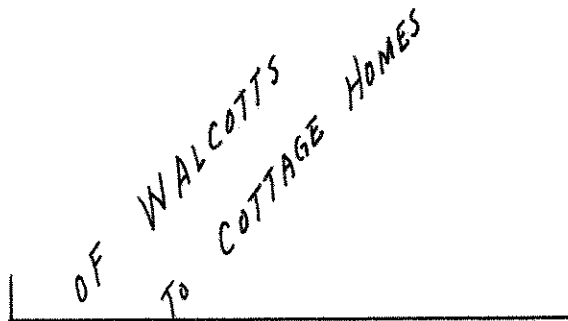
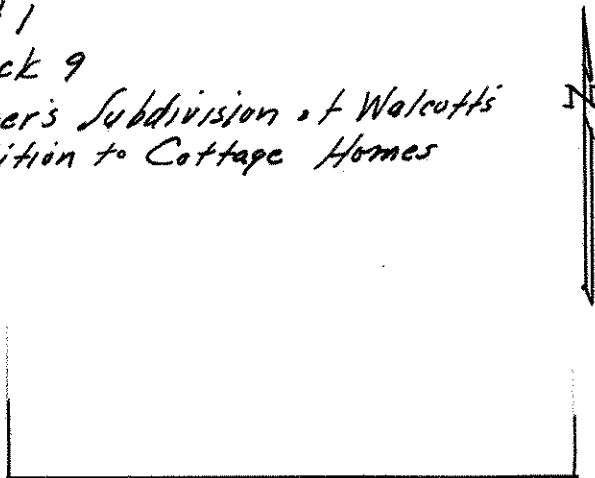
Description:

Lot 1
Block 9
Hager's Subdivision of Walcott's
Addition to Cottage Homes

Description:

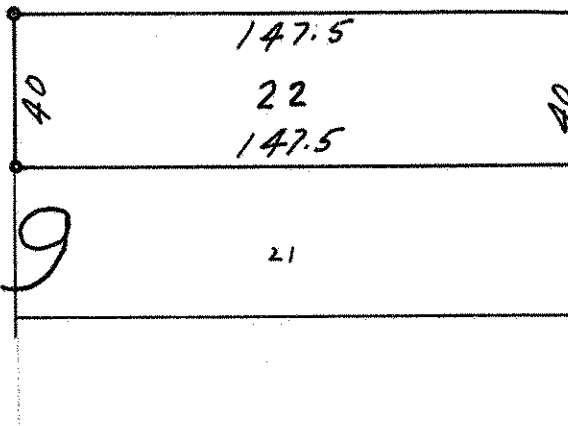
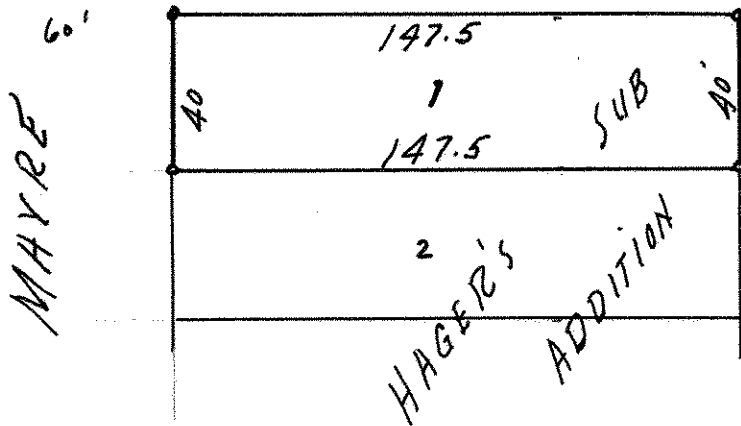
Lot 22
Block 9
Hager's Subdivision of Walcott's
Addition to Cottage Homes

ST



ST

60 W. COTTAGE AVE



MAYRE 60'

60' SYLVAN

o Denotes Iron Monument.