

FROM THE OFFICE OF

CHARLES O. GEORGI COMPANY

2215 West County Road B

Saint Paul 13, Minnesota

REGISTERED CIVIL ENGINEER AND LAND SURVEYOR

Certificate of Survey

I Hereby Certify that this plat shows a survey made by me of the property described on this plat, and that the corners are correctly placed as shown, and that all locations have been correctly shown.

Surveyed For J. Lynde - AAA House MOVERS.

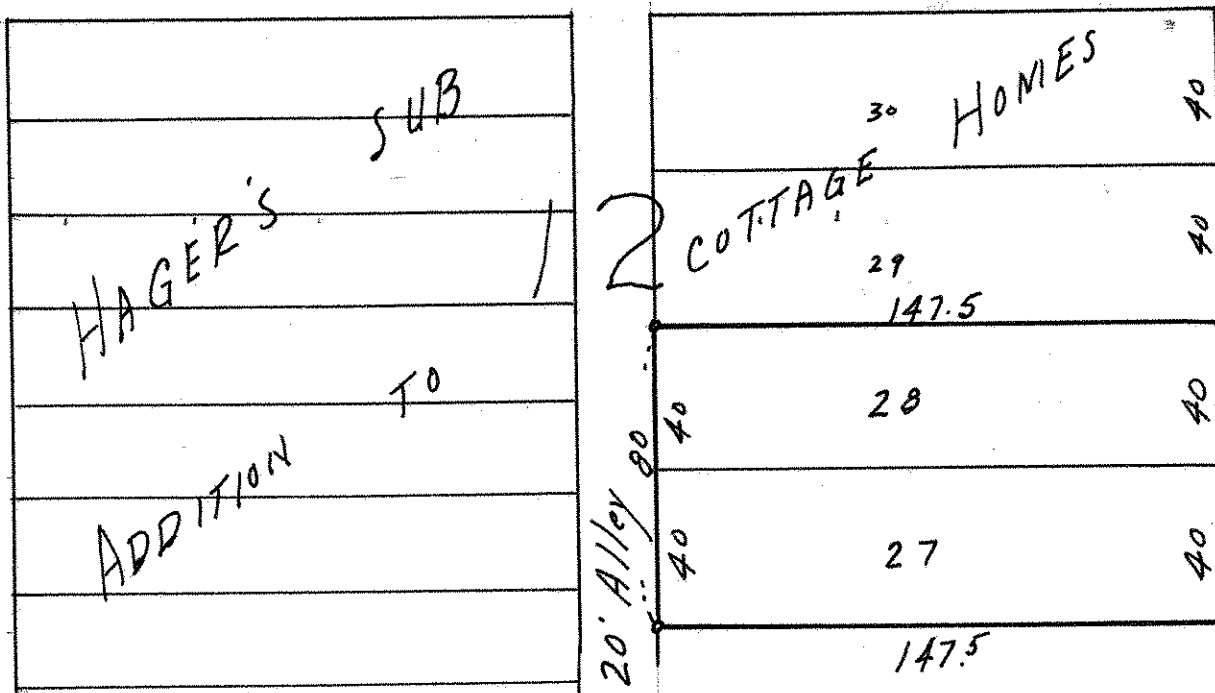
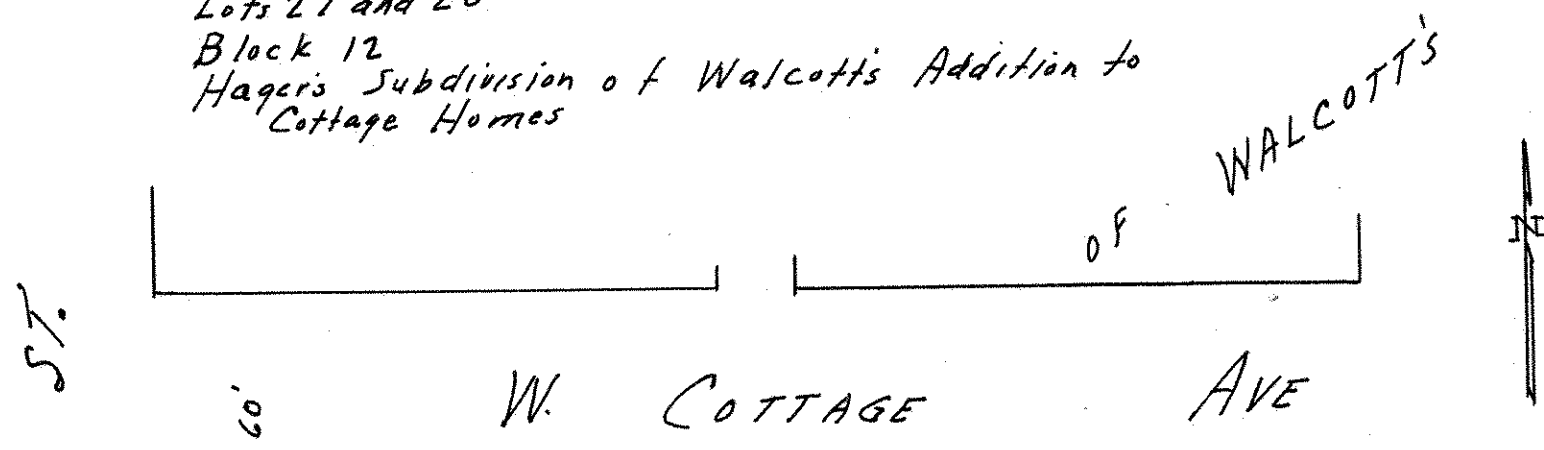
Date May 8, 1963

Scale 1" = 50'

By Charles O. Georgi
REGISTERED LAND SURVEYOR

Description:

Lots 27 and 28
Block 12
Hager's Subdivision of Walcott's Addition to
Cottage Homes



o Denotes Iron Monument.