

FROM THE OFFICE OF

CHARLES O. GEORGI COMPANY

2215 West County Road B

Saint Paul 13, Minnesota

REGISTERED CIVIL ENGINEER AND LAND SURVEYOR



**Certificate
of Survey**

I Hereby Certify that this plat shows a survey made by me of the property described on this plat, and that the corners are correctly placed as shown, and that all locations have been correctly shown.

Surveyed For *Al Hermes*
Date *Sept. 1963*
Scale *1" = 100'*

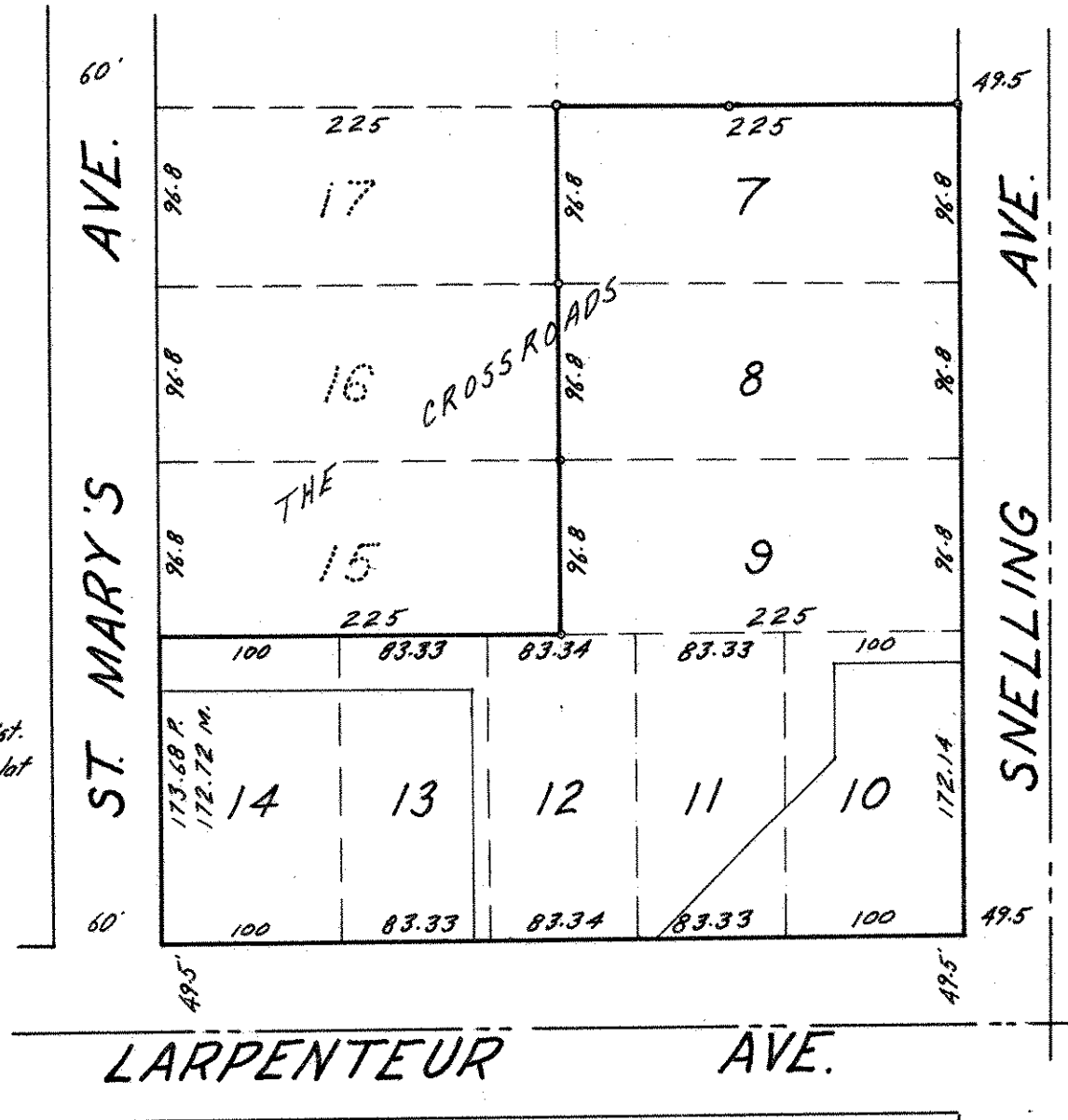
By *Charles O. Georgi*
REGISTERED LAND SURVEYOR

Description:

Lots 15, 16 and 17, The Crossroads

NOTE: Only the rear lot corners were monumented

*M - Denotes
measured dist.
P - Denotes plat
distance.*



° Denotes Iron Monument