

FROM THE OFFICE OF

# CHARLES O. GEORGI COMPANY

2215 West County Road B

Saint Paul 13, Minnesota

REGISTERED CIVIL ENGINEER AND LAND SURVEYOR



## Certificate of Survey

I Hereby Certify that this plat shows a survey made by me of the property described on this plat, and that the corners are correctly placed as shown, and that all locations have been correctly shown.

Surveyed For *R. F. Hatfield*

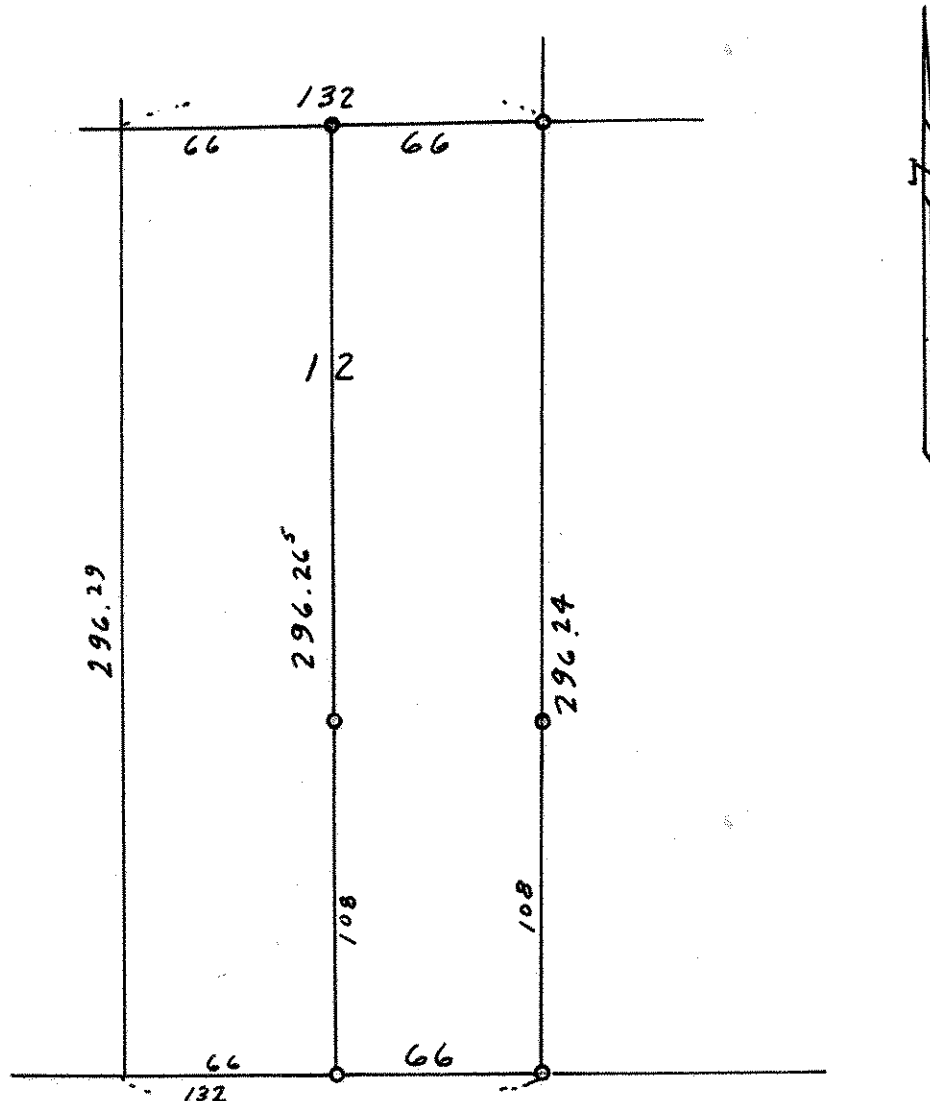
Date..... *August 1963*

Scale..... *1" = 60'*

By *Charles O. Georgi*  
REGISTERED LAND SURVEYOR

Description:

*Lot 12 except the West 66 feet thereof.  
DIEDRICH'S HOMESITES*



○ Denotes Iron Monument

--- ROSELAWN --- AVE. ---

South Line of NW 1/4  
of Section 15 T29 R22