

SW 28 2922

FROM THE OFFICE OF

# CHARLES O. GEORGI COMPANY

2215 West County Road B

Saint Paul 13, Minnesota

REGISTERED CIVIL ENGINEER AND LAND SURVEYOR



## Certificate of Survey

I Hereby Certify that this plat shows a survey made by me of the property described on this plat, and that the corners are correctly placed as shown, and that all locations have been correctly shown.

Surveyed For *Arlo W. Stuen*

Date *July 1963*

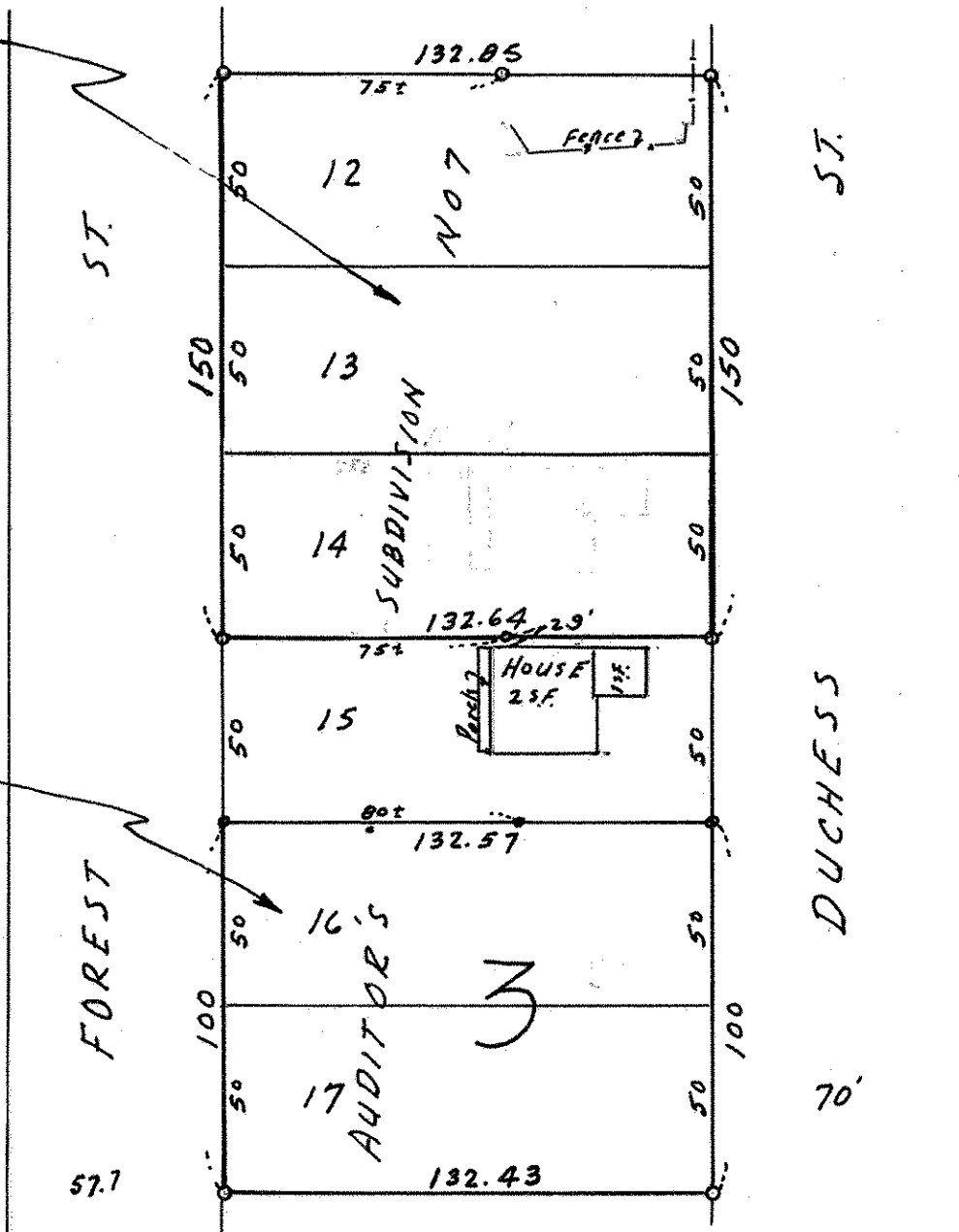
Scale *1" = 50'*

By *Charles O. Georgi*  
REGISTERED LAND SURVEYOR

### Description:

*Lots 12, 13, and 14  
Block 3  
Auditors Subdivision No. 7*

*Description:  
Lots 16 and 17  
Block 3  
Auditors Subdivision No. 7*



o Denotes Iron Monument.