

FROM THE OFFICE OF

# CHARLES O. GEORGI COMPANY

2215 West County Road B

Saint Paul 13, Minnesota

REGISTERED CIVIL ENGINEER AND LAND SURVEYOR

## Certificate of Survey

I Hereby Certify that this plat shows a survey made by me of the property described on this plat, and that the corners are correctly placed as shown, and that all locations have been correctly shown.

VOIGT FOUARE

Surveyed For SACRED HEART CONVENT

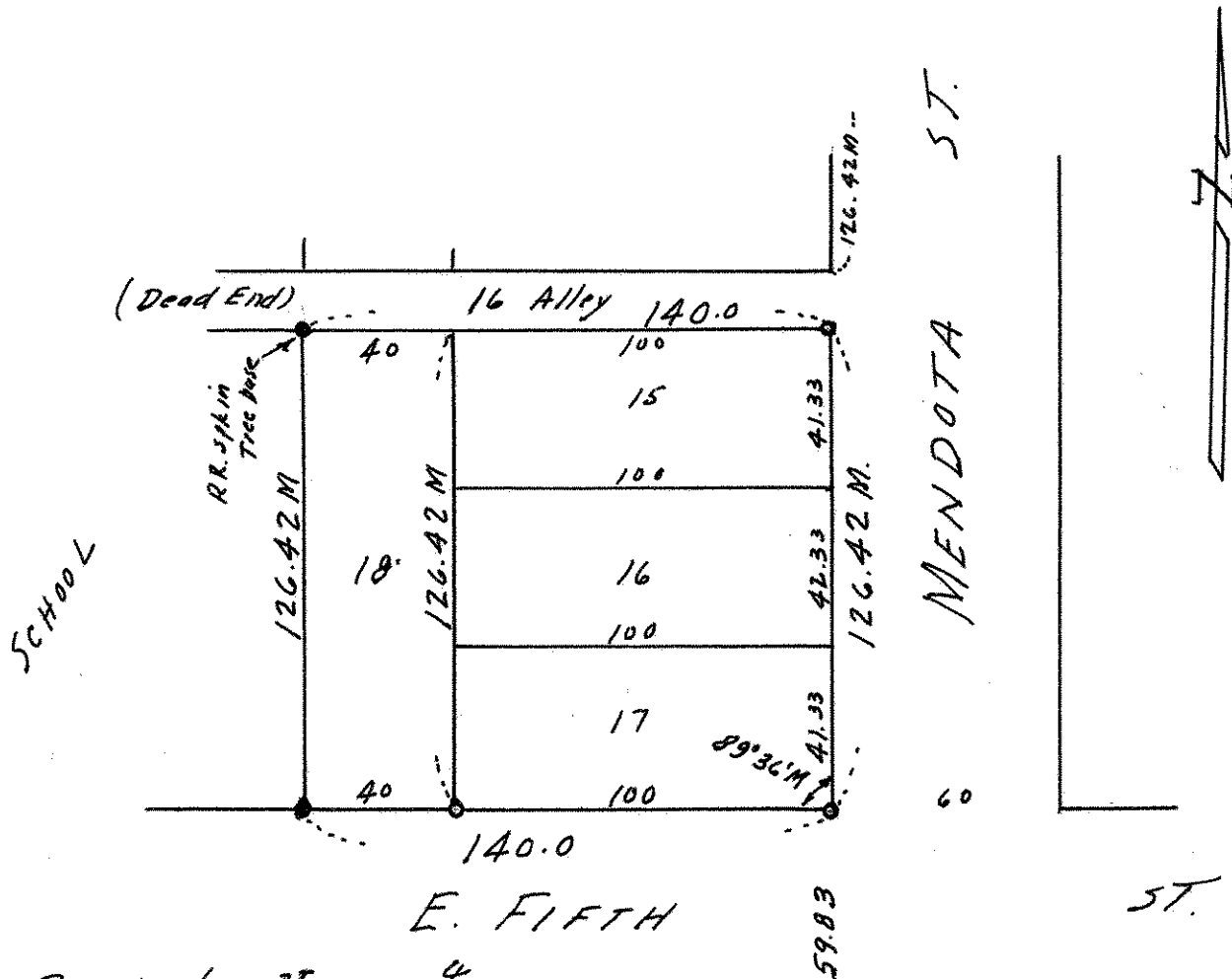
Date June 1963

Scale 1" = 50'

By Charles O. Georgi  
REGISTERED LAND SURVEYOR

Description:

*Lots 15, 16, 17 and 18  
Grube's Subdivision of Block 97,  
Lyman Dayton's Addition*



o Denotes Iron Monument  
M - Measured distance