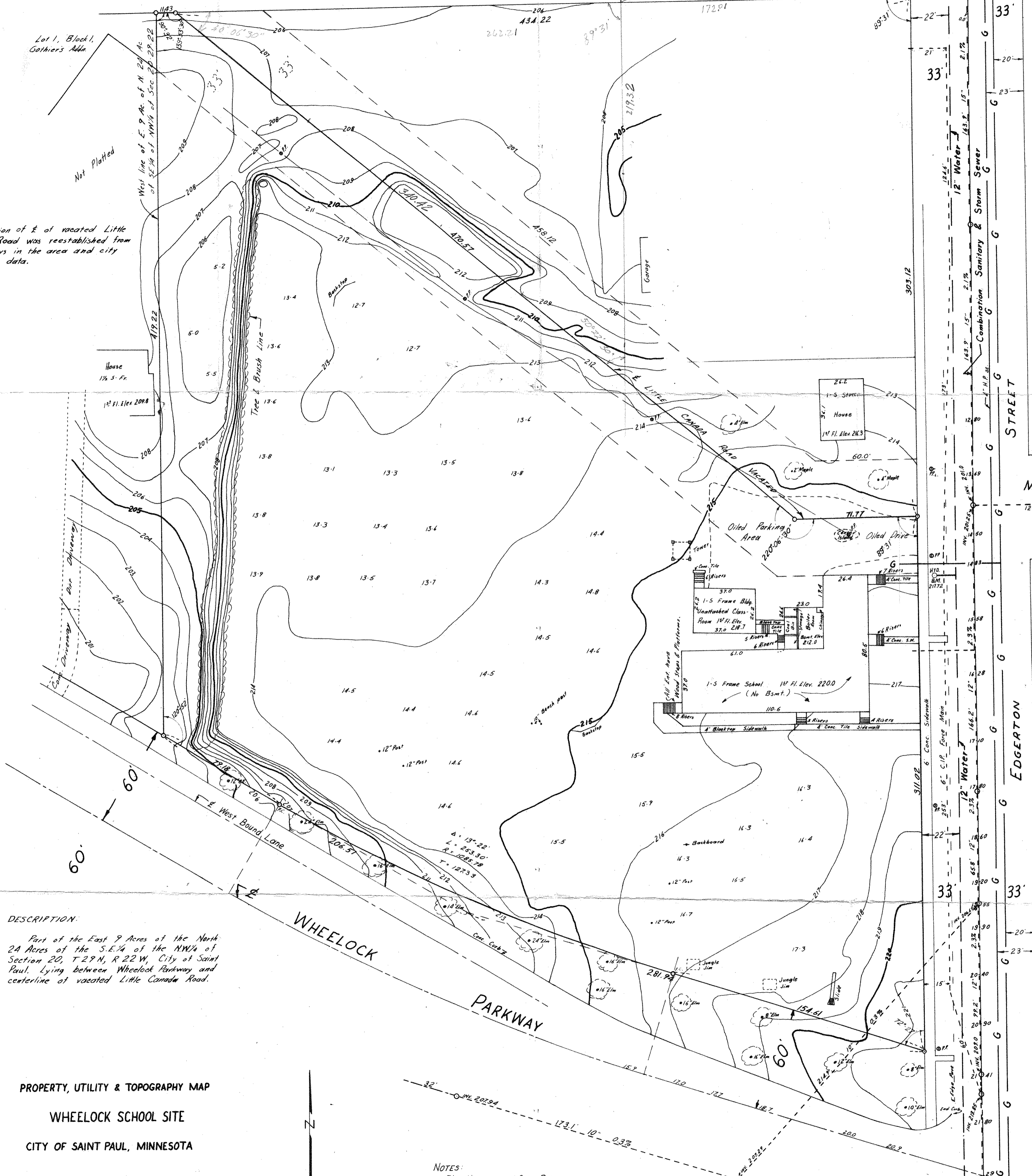


E. HOYT AVE.

NOTE:
Location of E of vacated Little Canada Road was reestablished from old surveys in the area and city reference data.



DESCRIPTION:
Part of the East 9 Acres of the North 2A Acres of the S.E. 1/4 of the NW 1/4 of Section 20, T 27 N, R 22 W, City of Saint Paul. Lying between Wheellock Parkway and centerline of vacated Little Canada Road.

PROPERTY, UTILITY & TOPOGRAPHY MAP
WHEELLOCK SCHOOL SITE
CITY OF SAINT PAUL, MINNESOTA

Scale 1" = 30'

NOTES:
Elevations are City Datum
Utility location, elevations & sizes
are per public record
BM top hyd. W. Side Edgerton
at Montana. 217.72

o Denotes Iron Monument

1962 ±

434.22
172
359.97-60
200.06-70
139.53-30
80.31
52.27-30
87.31
10-06-90
160.00