

FROM THE OFFICE OF

# CHARLES O. GEORGI COMPANY

2215 West County Road B

Saint Paul 13, Minnesota

REGISTERED CIVIL ENGINEER AND LAND SURVEYOR

## Certificate of Survey

I Hereby Certify that this plat shows a survey made by me of the property described on this plat, and that the corners are correctly placed as shown, and that all locations have been correctly shown.

Surveyed For DAVID FRATTALONE

Date JULY 1962

Scale 1" = 100'

By Charles O. Georgi  
REGISTERED LAND SURVEYOR

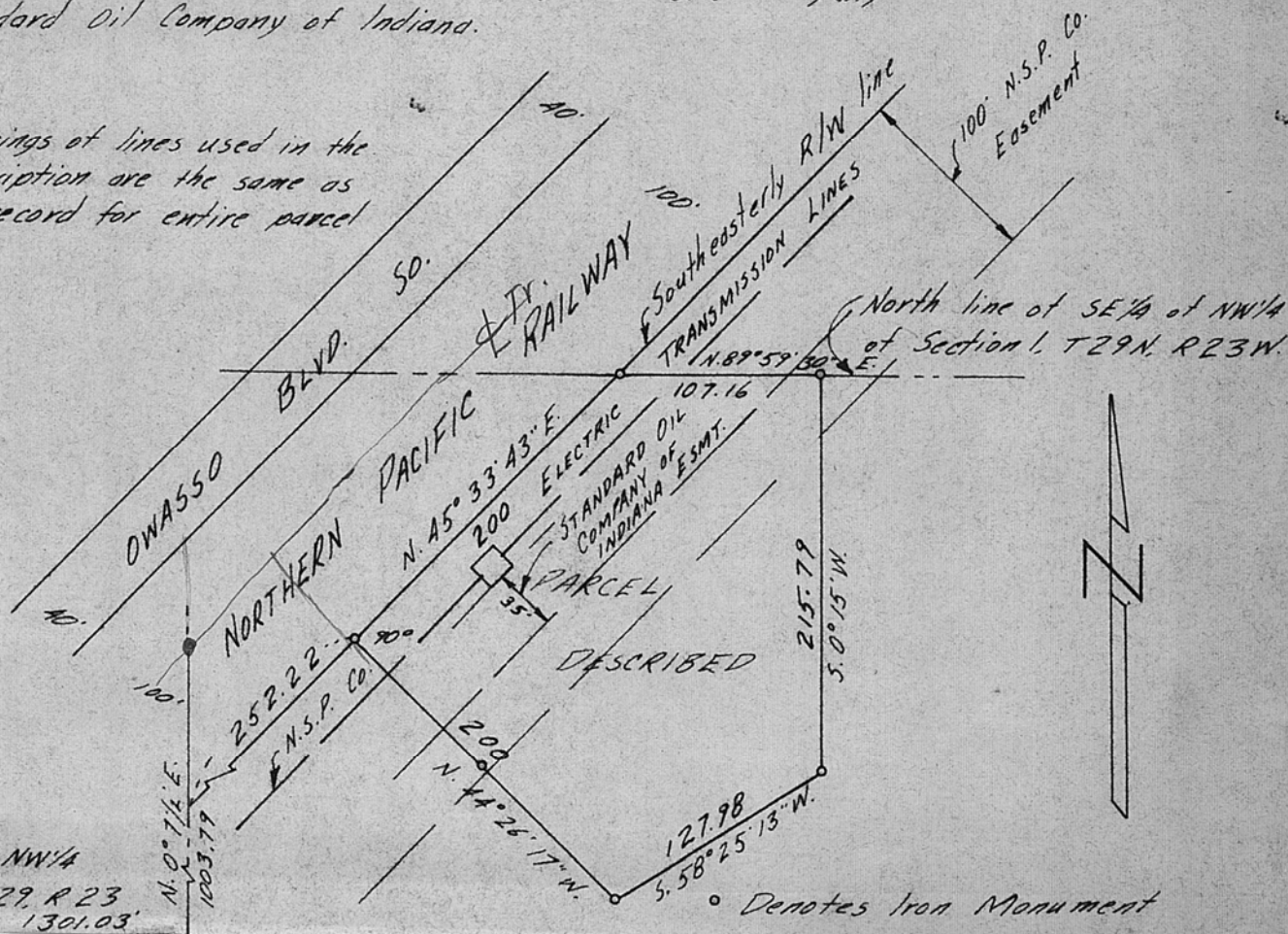
### Description:

That part of the SE 1/4 of the NW 1/4 of Section 1, T29N, R23W, described as follows: Commencing at the SW corner of said SE 1/4 of NW 1/4, which point is located 1301.03 feet East of the SW corner of said NW 1/4, thence N 0° 7 1/2' E a distance of 1003.79 feet to a point on the Southeastery right-of-way line of the Northern Pacific Railway Company; thence N 45° 33' 43" E. parallel to said right-of-way line a distance of 252.22 feet to the point of beginning, thence continuing along aforesaid line a distance of 200 feet to the North line of said SE 1/4 of NW 1/4, thence N 89° 59' 30" E. along said North line a distance of 107.16 feet to a point, thence S. 0° 15' W. a distance of 215.79 feet, thence S. 58° 25' 13" W. a distance of 127.98 feet, thence N. 44° 26' 17" W. a distance of 200 feet to the point of beginning.

Subject to the Easements of Northern States Power Company and Standard Oil Company of Indiana.

### Note:

The bearings of lines used in the above description are the same as those of record for entire parcel of land



SW Cor of NW 1/4  
Section 1, T29, R 23  
1301.03'

• Denotes Iron Monument