

FROM THE OFFICE OF

**CHARLES O. GEORGI COMPANY**

2215 West County Road B

Saint Paul 13, Minnesota

REGISTERED CIVIL ENGINEER AND LAND SURVEYOR

# Certificate of Survey

I Hereby Certify that this plat shows a survey made by me of the property described on this plat, and that the corners are correctly placed as shown, and that all locations have been correctly shown.

Surveyed For *file* **GROVER DIMOND ASSOCIATES**

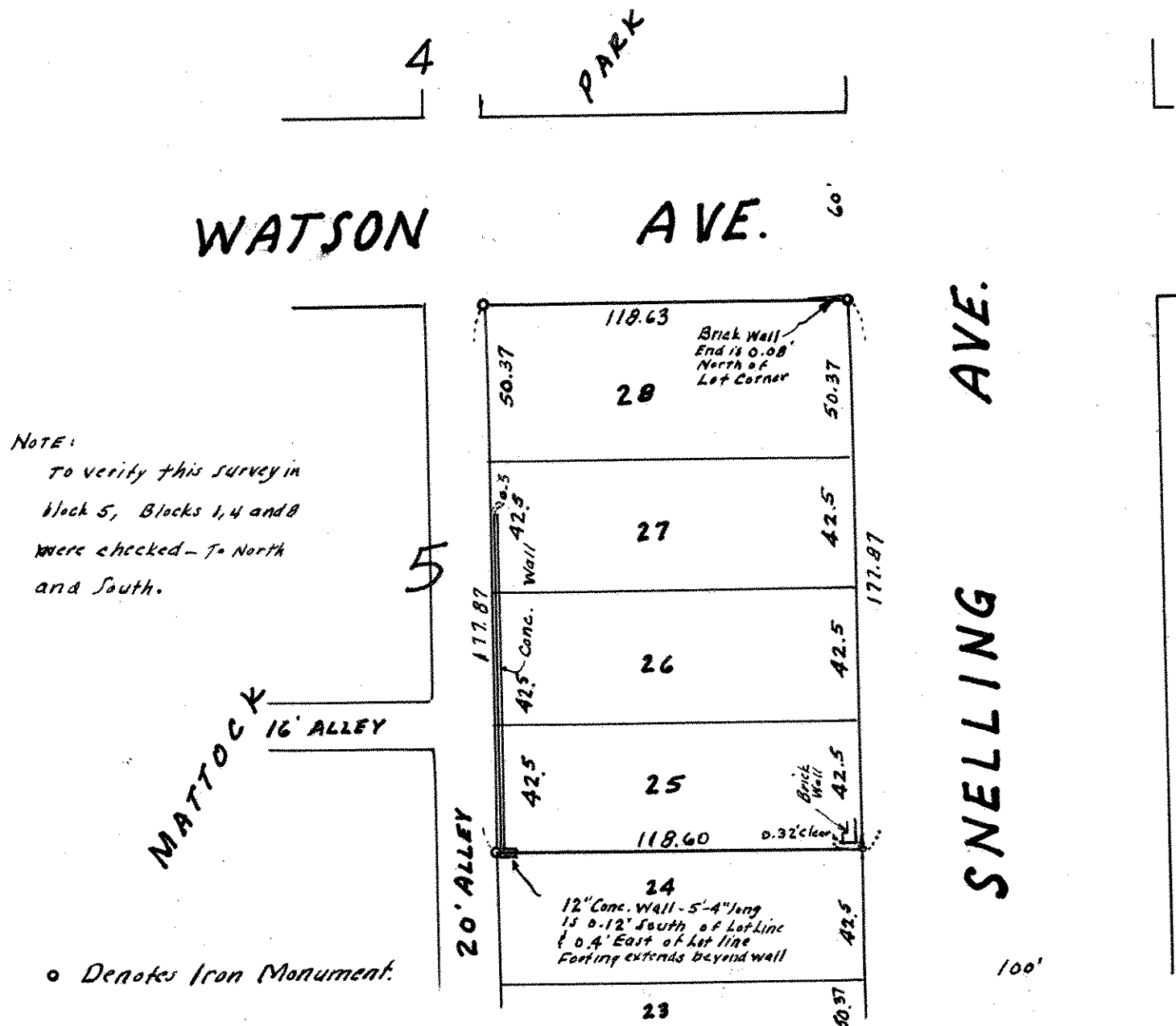
Date **January 1961**

Scale **1" = 50'**

By *Charles O. Georgi*  
REGISTERED LAND SURVEYOR

## Description:

**LOTS 25, 26, 27 and 28  
Block 5  
MATTOCK PARK**



o Denotes Iron Monument.