


FROM THE OFFICE OF

CHARLES O. GEORGI COMPANY

2215 West County Road B

Saint Paul 8, Minnesota

REGISTERED CIVIL ENGINEER AND LAND SURVEYOR



**Certificate
of Survey**

I Hereby Certify that this plat shows a building location survey made by me on the property described on this plat, and that all locations, have been correctly shown.

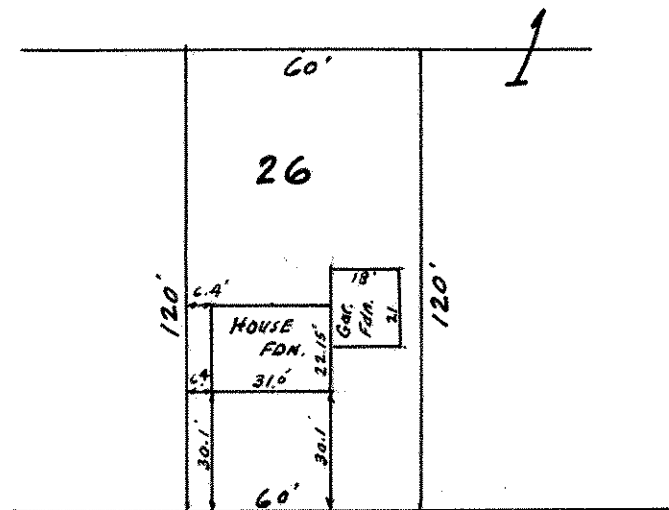
Date *February 1961*Scale 1" = *60'*

By


 REGISTERED LAND SURVEYOR

DONNAY-REITZ INC

Description:

*Lot 26**Block 1**Afton Heights Addition*DELLRIDGE *60'* AVE.