

NW 20 29 2

FROM THE OFFICE OF

CHARLES O. GEORGI COMPANY

2215 West County Road B

Saint Paul 13, Minnesota

REGISTERED CIVIL ENGINEER AND LAND SURVEYOR

Certificate of Survey

I Hereby Certify that this plat shows a survey made by me of the property described on this plat, and that the corners are correctly placed as shown, and that all locations have been correctly shown.

Surveyed For MR. JAMES HAAS

Date JUNE 1961

Scale 1" = 50'

By Charles O. Georgi
REGISTERED LAND SURVEYOR

Description:

Lots 23, 24, 25, 26 and 27
Block 1
UFTON GROVE PLAT

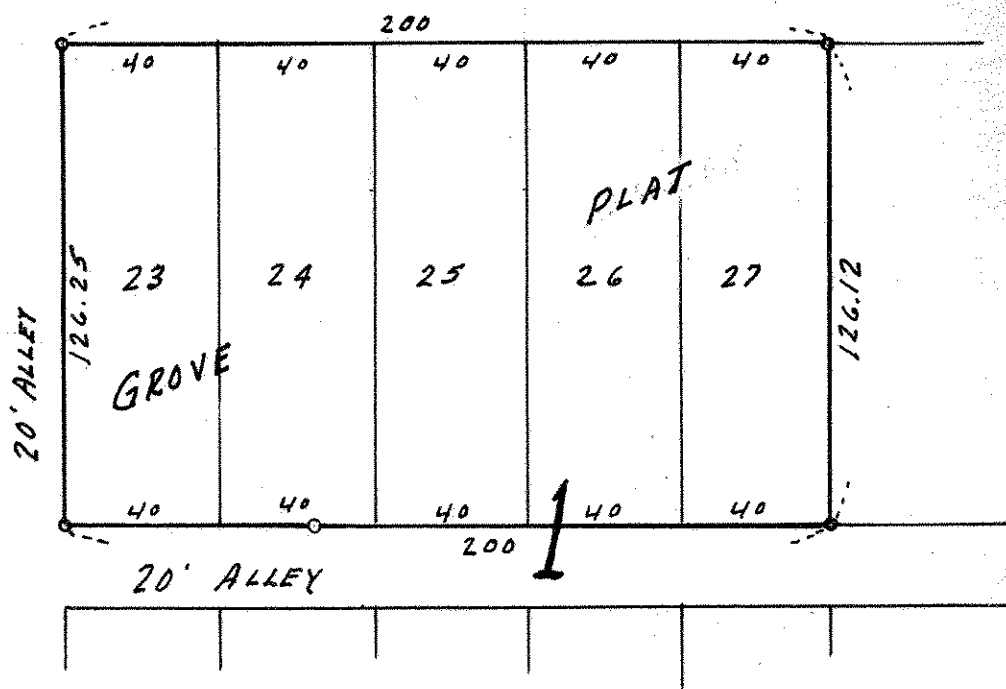
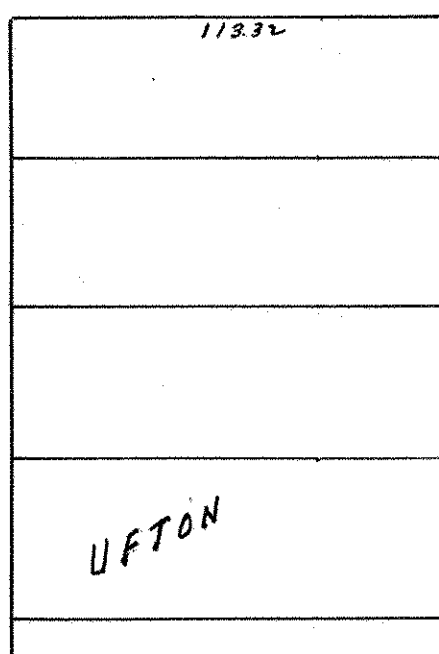


LARPENTEUR

AVE.

60'

EDGERTON ST.



o Denotes Iron Monument.