


FROM THE OFFICE OF

CHARLES O. GEORGI COMPANY

2215 West County Road B

Saint Paul 8, Minnesota

REGISTERED CIVIL ENGINEER AND LAND SURVEYOR



**Certificate
of Survey**

I Hereby Certify that this plat shows a building location survey made by me on the property described on this plat, and that all locations, have been correctly shown.

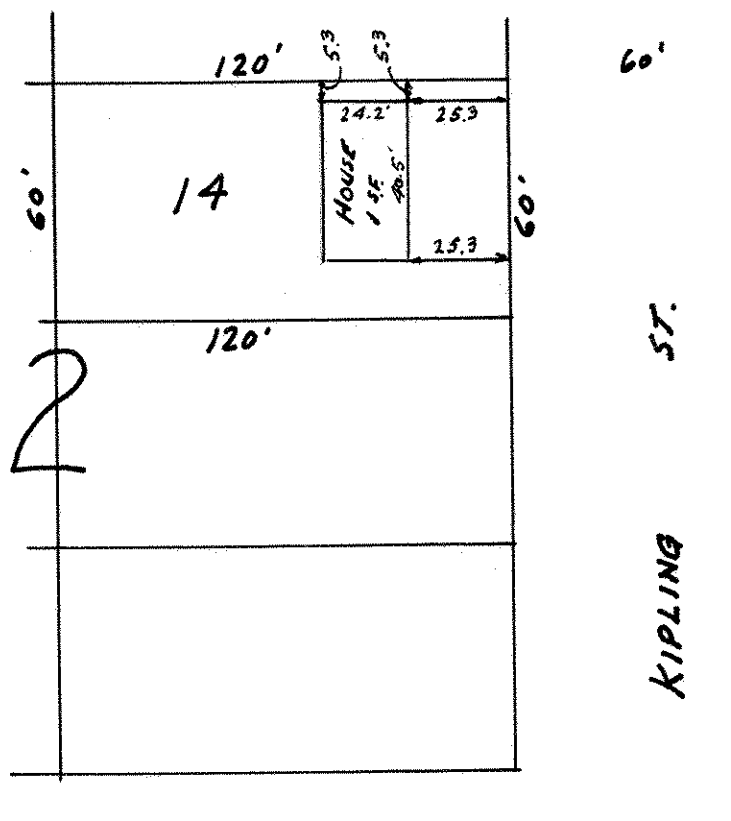
Date OCTOBER 1960Scale 1" = 50'
 By Charles O. Georgi
 REGISTERED LAND SURVEYOR

DONNAY-REITZ INC
 Description:

Lot 14

Block 2

AFTON HEIGHTS ADDITION



LONGFELLOW AVE.