

FROM THE OFFICE OF

**CHARLES O. GEORGI COMPANY**

2215 West County Road B

Saint Paul 13, Minnesota

REGISTERED CIVIL ENGINEER AND LAND SURVEYOR

# Certificate of Survey

I Hereby Certify that this plat shows a survey made by me of the property described on this plat, and that the corners are correctly placed as shown, and that all locations have been correctly shown.

Surveyed For **DONNAY-REITZ INC.**

Date..... **August 1960**

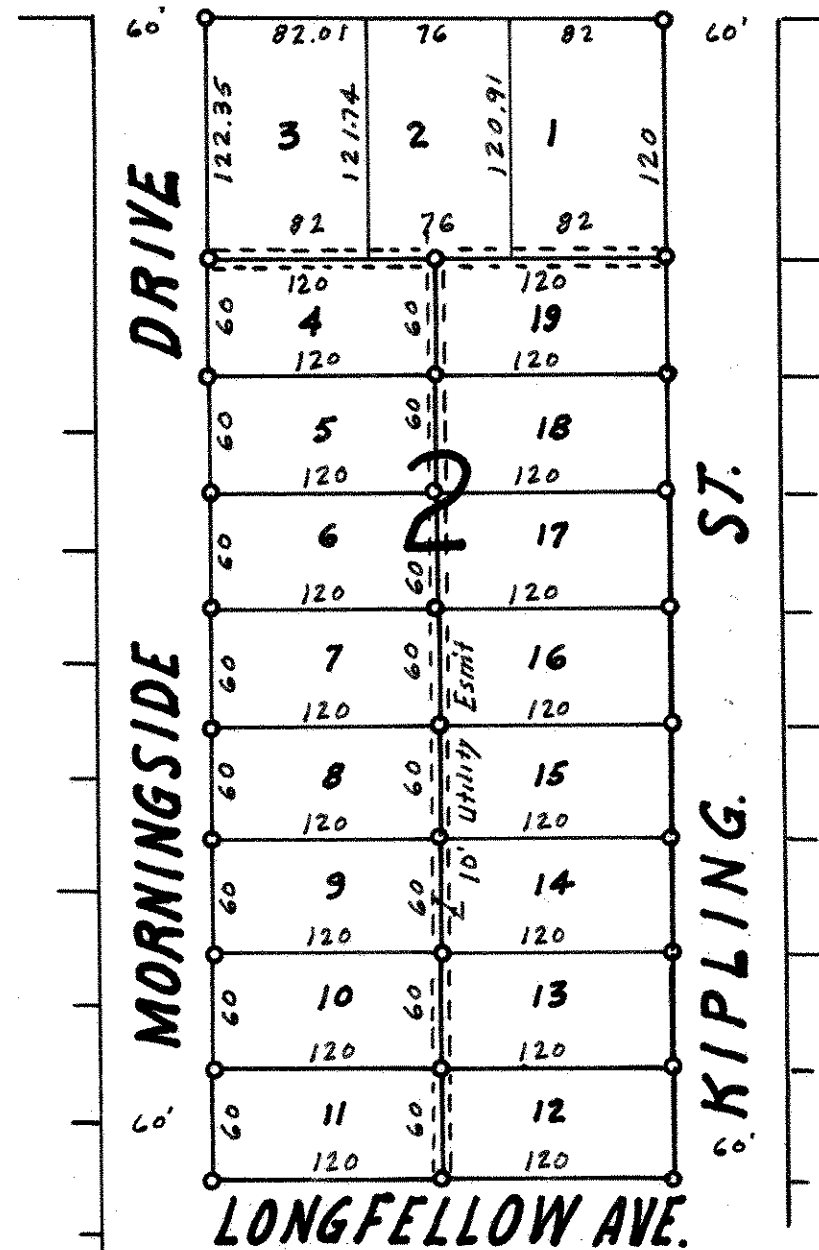
Scale..... **1" = 100'**

By *Charles O. Georgi*  
REGISTERED LAND SURVEYOR

## Description:

Lot  
Block 2  
AFTON HEIGHTS ADDITION

**UPPER 80' AFTON ROAD**



○ Denotes Iron Monument