

FROM THE OFFICE OF

CHARLES O. GEORGI COMPANY

2215 West County Road B

Saint Paul 13, Minnesota

REGISTERED CIVIL ENGINEER AND LAND SURVEYOR

Certificate of Survey

I Hereby Certify that this plat shows a survey made by me of the property described on this plat, and that the corners are correctly placed as shown, and that all locations have been correctly shown.

Surveyed For **DONNAY-REITZ INC**

Date **November 1960**

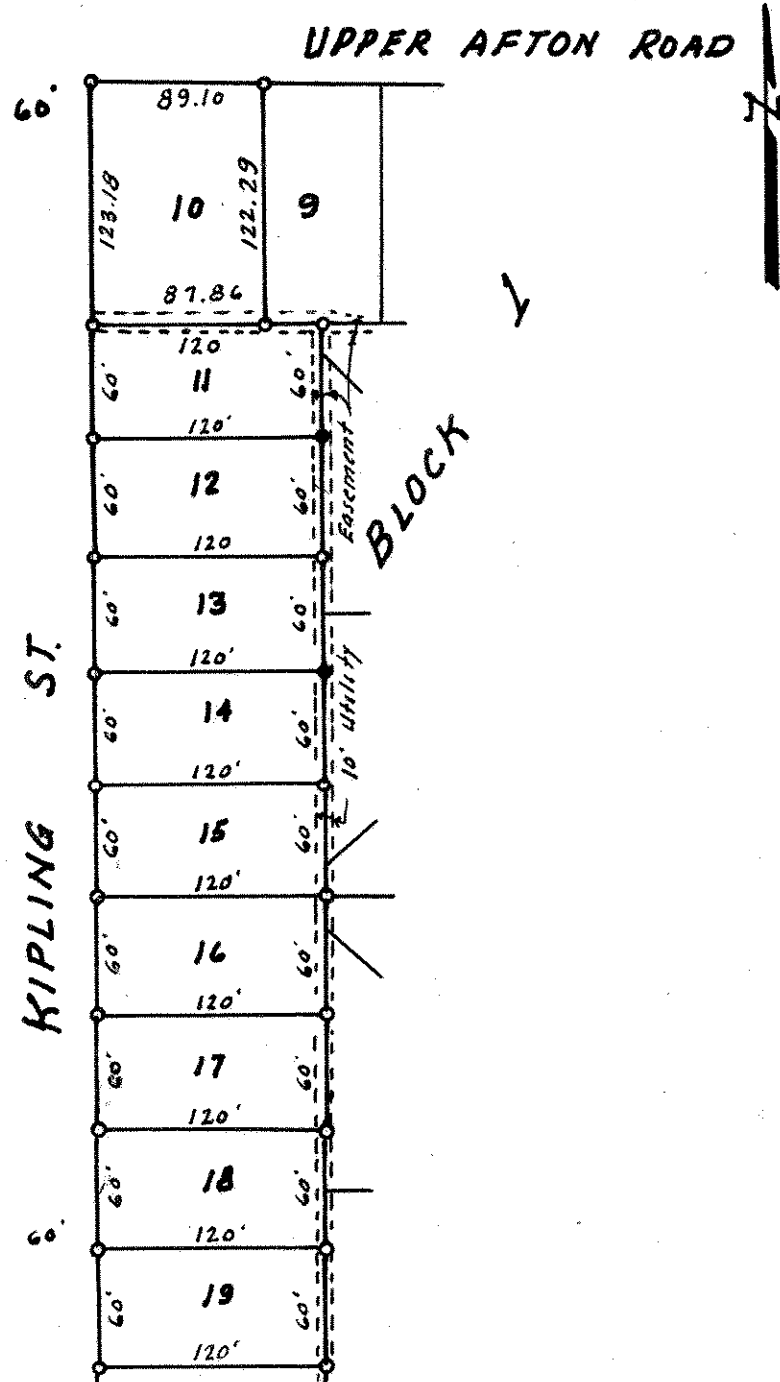
Scale **1" = 100'**

By *Charles O. Georgi*
REGISTERED LAND SURVEYOR

Description:

Lot
Block 1
AFTON HEIGHTS ADDITION

LONGFELLOW AVE.



○ Denotes Iron Monument.