

SW 6 29 22

FROM THE OFFICE OF

CHARLES O. GEORGI COMPANY

2215 West County Road B

Saint Paul 13, Minnesota

REGISTERED CIVIL ENGINEER AND LAND SURVEYOR

Certificate of Survey

I Hereby Certify that this plat shows a survey made by me of the property described on this plat, and that the corners are correctly placed as shown, and that all locations have been correctly shown.

Surveyed For **ORVILLE C. HUFFMAN**

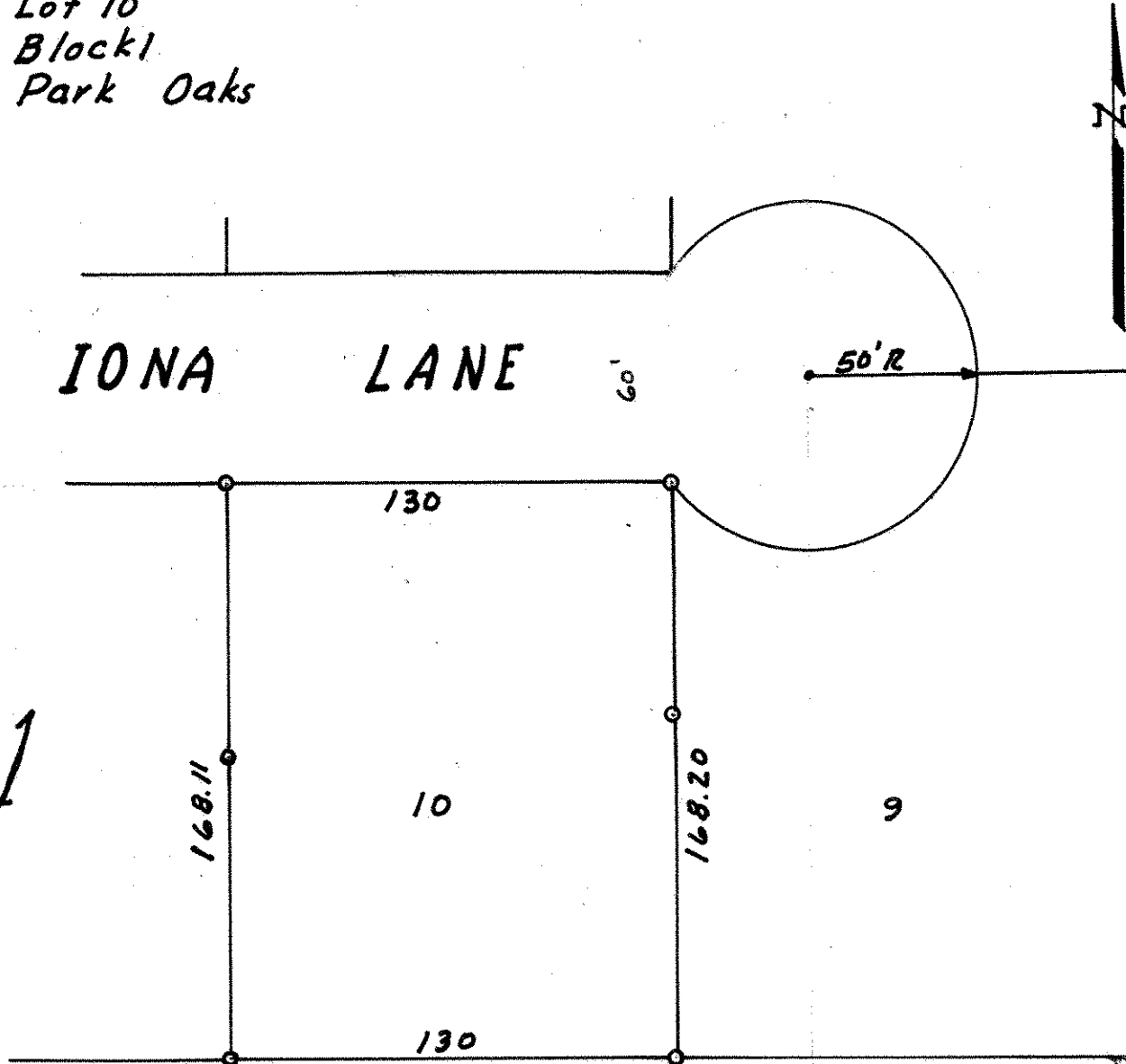
Date..... **August 1960**

Scale..... **1" = 50'**

By *Charles O. Georgi*
REGISTERED LAND SURVEYOR

Description:

**Lot 10
Block 1
Park Oaks**



o Denotes Iron Monument.