

FROM THE OFFICE OF

CHARLES O. GEORGI COMPANY

2215 West County Road B

Saint Paul 13, Minnesota

REGISTERED CIVIL ENGINEER AND LAND SURVEYOR

Certificate
of Survey

I Hereby Certify that this plat shows a survey made by me of the property described on this plat, and that the corners are correctly placed as shown, and that all locations have been correctly shown. *Reset or relocated corners and points as shown.*

Surveyed For B. GORKA Tully

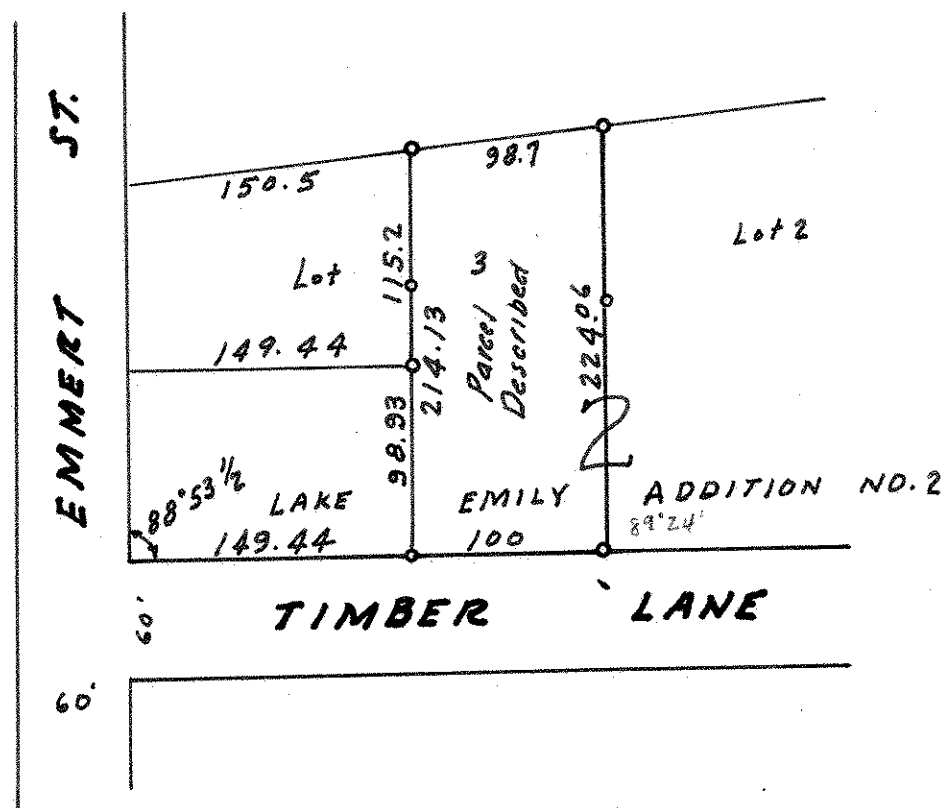
Date February 1960 Nov 9, 1965

Scale 1"=100'

By Charles O. Georgi
REGISTERED LAND SURVEYOR

Description:

Lot 3, Block 2, LAKE EMILY ADDITION NO. 2 except the Westerly 149.44 feet thereof, Ramsey County, Minnesota; the Westerly line thereof being parallel to EMMERT ST.



o Denotes Iron Monument.