

FROM THE OFFICE OF

CHARLES O. GEORGI COMPANY

2215 West County Road B

Saint Paul 13, Minnesota

REGISTERED CIVIL ENGINEER AND LAND SURVEYOR

Certificate of Survey

I Hereby Certify that this plat shows a survey made by me of the property described on this plat, and that the corners are correctly placed as shown, and that all locations have been correctly shown.

Surveyed For JOHN T. COMMERFORD

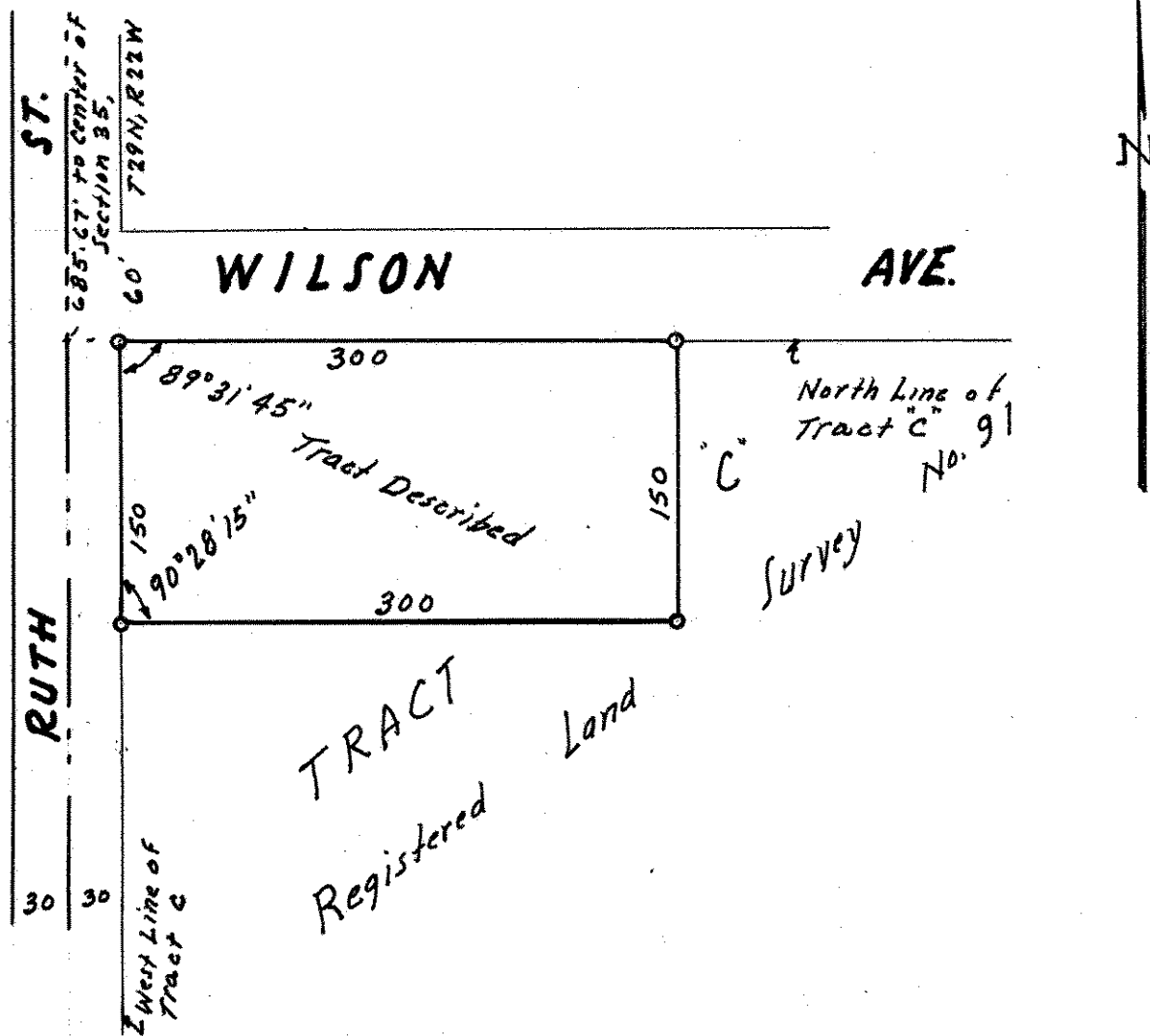
Date April 1959

Scale 1" = 100'

By Charles O. Georgi
REGISTERED LAND SURVEYOR

Description:

The North 150 feet of the West 300 feet of Tract "C", Registered Land Survey No. 91, files of Registrar of Titles, Ramsey County, Minnesota



o Iron Monument.