

S.W.X. 22-29-22

FROM THE OFFICE OF

# CHARLES O. GEORGI COMPANY

2215 West County Road B

Saint Paul 13, Minnesota

REGISTERED CIVIL ENGINEER AND LAND SURVEYOR

## Certificate of Survey

I Hereby Certify that this plat shows a survey made by me of the property described on this plat, and that the corners are correctly placed as shown, and that all locations have been correctly shown.

Surveyed For W<sup>m</sup> BRENNER

Date July 1958

Scale 1" = 50'

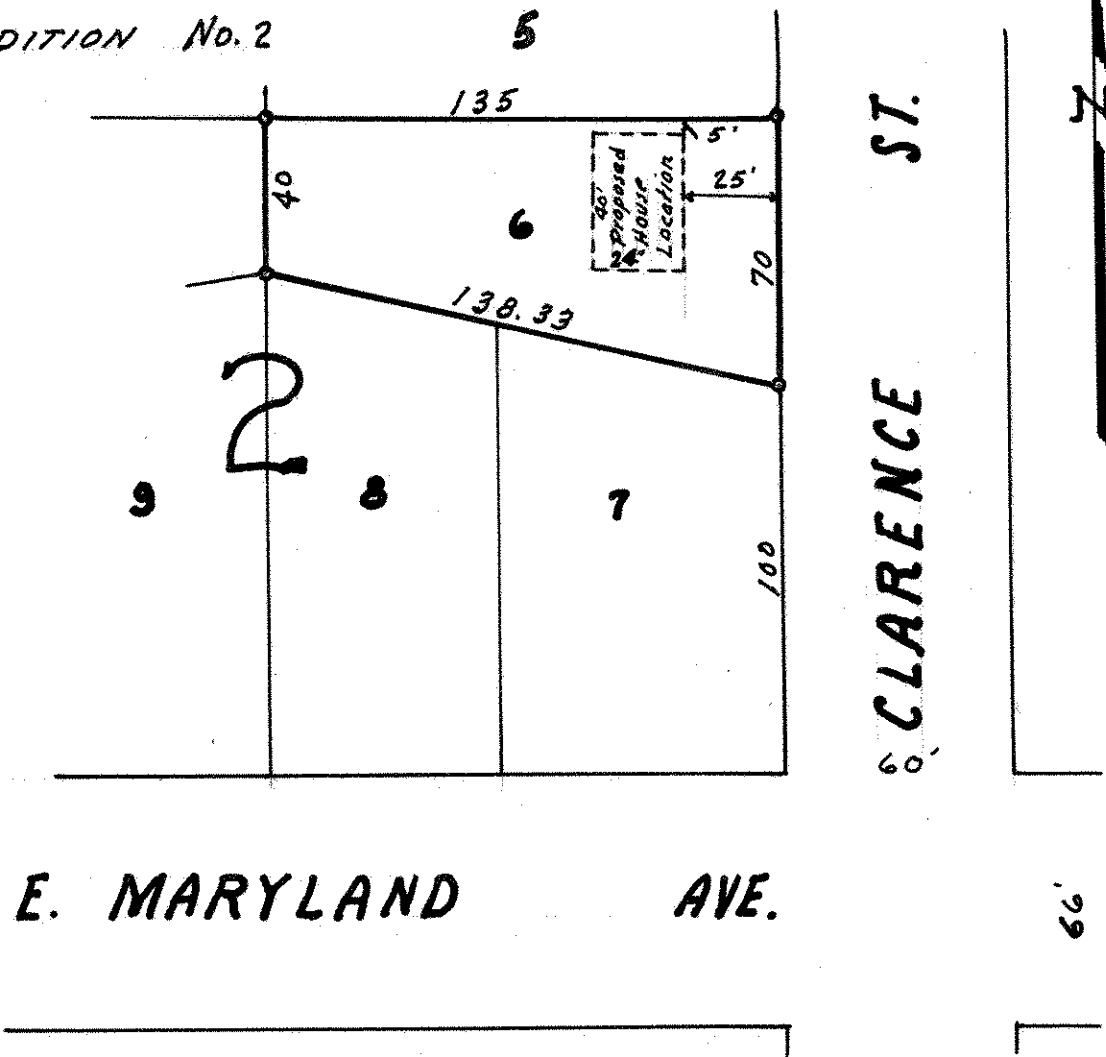
By Charles O. Georgi  
REGISTERED LAND SURVEYOR

Description:

Lot 6

Block 2

BRENNER ADDITION No. 2



o Denotes Iron Monument.